

Fully Solved

4000 MCQs

For

ESE, GATE, PSUs

**Electronics
Engineering**





MADE EASY Publications Pvt. Ltd.

Corporate Office: 44-A/4, Kalu Sarai (Near Hauz Khas Metro Station), New Delhi-110016

E-mail: infomep@madeeasy.in

Contact: 9021300500

Visit us at: www.madeeasypublications.org

4000 Multiple Choice Questions for ESE, GATE and PSUs : Electronics Engineering

© Copyright, by MADE EASY Publications Pvt. Ltd.

All rights are reserved. No part of this publication may be reproduced, stored in or introduced into a retrieval system, or transmitted in any form or by any means (electronic, mechanical, photo-copying, recording or otherwise), without the prior written permission of the above mentioned publisher of this book.

First Edition: 2018

Second Edition: 2019

Reprint: 2020

Reprint: 2022

Reprint: 2023

PREFACE



B. Singh (Ex. IES)

This Electronics Engineering practice book containing nearly 4000 MCQs focuses in-depth understanding of subjects which has been segregated topicwise to disseminate all kind of exposure to students in terms of quick learning and deep apt. The topicwise segregation has been done to align with contemporary competitive examination pattern. Attempt has been made to bring out all kind of probable competitive questions for the aspirants

preparing for ESE, GATE and PSUs. The content of this book ensures threshold level of learning and wide range of practice questions which is very much essential to boost the exam time confidence level and ultimately to succeed in all prestigious engineers' examinations. It has been ensured from MADE EASY team to have broad coverage of subjects at chapter level.

While preparing this book utmost care has been taken to cover all the chapters and variety of concepts which may be asked in the exams. The solutions and answers provided are upto the closest possible accuracy. The full efforts have been made by MADE EASY Team to provide error free solutions and explanations.

I have true desire to serve student community by way of providing good sources of study and quality guidance. I hope, this book will be proved an important tool to succeed in competitive examinations. Any suggestions from the readers for the improvement of this book are most welcome.

B. Singh (Ex. IES)

Chairman and Managing Director
MADE EASY Group

CONTENTS

1. Network Theory..... 1-63	5. Signals and Systems.....193-230
1. Basic of Network Analysis 1	1. Basic of Signal and Systems 193
2. Steady State Sinusoidal Analysis7	2. Continuous & Discrete Time LTI Systems.. 196
3. Power and Energy Calculation 11	3. Fourier Series 199
4. Resonance 12	4. Continuous Time Fourier Transform..... 199
5. Network Theorem 15	5. Laplace Transform 203
6. Transient Analysis 19	6. Discrete Time Fourier Transform..... 206
7. Two Port Networks 25	7. Z-Transform 209
8. Graph Theory 28	8. Discrete Fourier Transform and Fast Fourier Transform..... 213
9. Magnetic Coupled 28	9. Digital Filter Design and Application..... 213
10. Network Synthesis and Filter 30	
2. Control Systems 64-108	6. Communication Systems231-259
1. Block Diagram and Signal Flow Graph..... 64	1. Random Variables and Random Process .. 231
2. Mathematical modelling of Electro-mechanical Systems 67	2. Amplitudes Modulation 232
3. Time Domain Analysis 68	3. Angle Modulation 235
4. Routh Hurwitz Stability Criterion 73	4. Receivers 238
5. Root Locus 76	5. Noise Performance of Analog Communication System..... 239
6. Frequency Domain Analysis..... 79	6. Pulse Modulation 240
7. Compensator and Controller 85	7. Digital Base Band Transmission 241
8. State Space Analysis..... 87	8. Digital Pass Band Transmission 243
	9. Information Theory 245
3. Electronic Devices & Circuits 109-138	10. Error Control Coding..... 246
1. Semi-conductor Physics 109	7. Digital Circuits260-299
2. P-N Junction Diodes..... 112	1. Number System 260
3. Bipolar Junction Transistor 115	2. Boolean Algebra 261
4. Field Effect Transistor 120	3. Logic Gates 263
5. Special Diodes & Optoelectronic Devices..... 123	4. Combinational Circuits 266
6. Power Switching Devices 126	5. Sequential Circuits..... 270
7. VLSI Technology 127	6. Memory & Programmable Logic Device... 276
4. Analog Circuits 139-192	7. Logic Families 278
1. Diode Circuits 139	8. D/A and A/D Converter 280
2. BJT Biasing 143	8. Microprocessors.....300-325
3. FET Biasing 147	1. Basics of Microprocessor 300
4. Single-stage Amplifier Analysis 149	2. Instruction set of 8085 Microprocessor..... 302
5. Multi-stage Amplifier Analysis 153	3. Memory and Memory Interfacing 306
6. Frequency Response of Amplifier 154	4. Microprocessor 8085 Interfacing 309
7. Feedback Amplifiers 156	5. Microprocessor 8085 Interrupts 310
8. Oscillator 158	6. Microprocessor Programming 312
9. Operation Amplifiers 159	
10. Multivibrators and 555 Timers..... 165	
11. Power Amplifier 167	

9. Electromagnetic Theory	326-364	12. Materials Science.....	428-451
1. Vector Calculus	326	1. Crystalline Structures.....	428
2. Electromagnetics	328	2. Dielectric and Ceramic Materials.....	431
3. Time Varying Field (Maxwell Equation) and Uniform Plane Wave	331	3. Magnetic Materials	435
4. Transmission Line.....	338	4. Conductors and Superconductors	441
5. Waveguide.....	342	5. Nano Materials	445
6. Antenna	345	13. Power Electronics	452-476
10. Microwave Engineering	365-387	1. Power Semiconductor Devices	452
1. Microwave Transmission Lines, Waveguides and Cavity Resonators	365	2. Controlled and Uncontrolled Rectifiers	457
2. Microwave Components, Solid State Devices.....	370	3. Choppers.....	463
3. Microwave Antennas, Measurements ..	373	4. Inverters.....	465
4. Microwave Tubes and Circuits.....	378	5. Power Semiconductor Drives	466
5. Microwave Communication Systems ...	380	6. Miscellaneous.....	467
11. Electronic Measurements & Instrumentation	388-427	14. Computer Fundamentals.....	477-492
1. Basics of Measurement & Error Analysis...	388	15. General Engineering	493-505
2. Indicating Type Instruments	392	16. General Awareness.....	506-536
3. Bridge Measurements and Q-meter.....	396	17. BSNL (JTO) Solved Paper-2006.....	537-554
4. Electrical and Electronic Instruments ...	399	18. BSNL (JTO) Solved Paper-2009.....	555-574
5. Cathode Ray Oscilloscope (CRO).....	403		
6. Digital System for Measurement.....	406		
7. Transducers	408		
8. Data Acquisition Systems and Telemetry Systems	411		

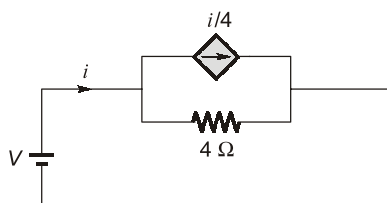


UNIT 1

Network Theory

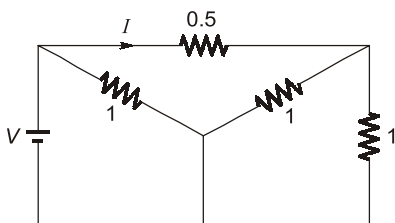
1. Basic of Network Analysis

- Q.1** In the network shown below, the effective resistance faced by the voltage source is



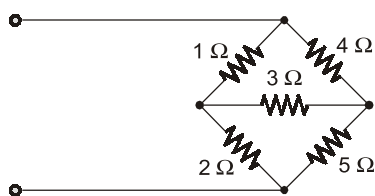
- (a) $4\ \Omega$ (b) $3\ \Omega$
(c) $2\ \Omega$ (d) $1\ \Omega$

- Q.2** In the circuit shown in the figure, if $I = 2\text{ A}$, then the value of the battery voltage V will be



- (a) 5 V (b) 3 V
(c) 2 V (d) 1 V

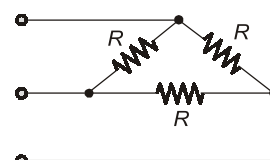
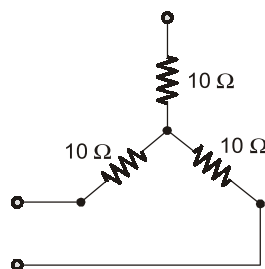
- Q.3** The input resistance of the circuit shown is



- (a) $1\ \Omega$ (b) $3.36\ \Omega$
(c) $2.24\ \Omega$ (d) $1.12\ \Omega$

- Q.4** In a network made up of linear resistors and ideal voltage sources, values of all resistors are doubled. Then the voltage across each resistor is
- (a) Doubled
(b) Halved
(c) Decreased four times
(d) Not changed

- Q.5** Star connected load is shown in the figure. The equivalent delta connection has a value of R in Ω is

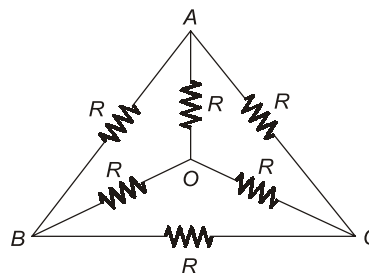


- (a) $10\ \Omega$ (b) $30\ \Omega$
(c) $10/3\ \Omega$ (d) $20/3\ \Omega$

- Q.6** Kirchhoff's current law is valid for

- (a) DC circuit only
(b) AC circuit only
(c) Both DC and AC circuits
(d) Sinusoidal source only

- Q.7** The effective resistance between the terminals A and B in the circuit shown in the figure is



- (a) R (b) $R - 1$
(c) $R/2$ (d) $6R/11$

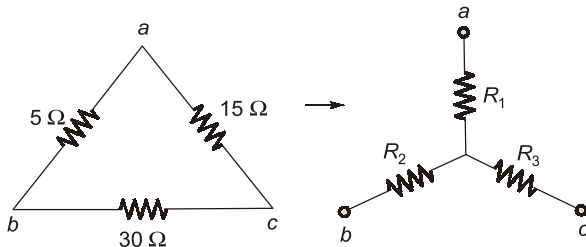
- Q.8** The nodal method of circuit analysis is based on

- (a) KVL and Ohm's law
(b) KCL and Ohm's law
(c) KCL and KVL
(d) KCL and KVL and Ohm's law

- Q.9** Twelve $1\ \Omega$ resistances are used as edge to form a cube. The resistance between two diagonally opposite corners of the cube is

- (a) $\frac{5}{6} \Omega$ (b) 1Ω
 (c) $\frac{6}{5} \Omega$ (d) $\frac{3}{2} \Omega$

Q.10 A delta connected network with its Y-equivalent is shown in figure. The resistances R_1 , R_2 and R_3 (in ohms) are respectively

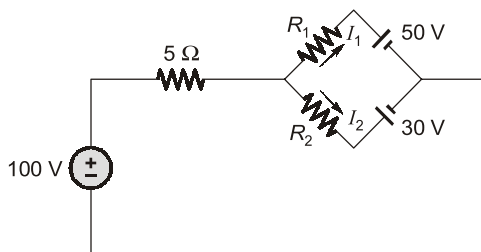


- (a) 1.5Ω , 3Ω and 9Ω
 (b) 3Ω , 9Ω and 1.5Ω
 (c) 9Ω , 3Ω and 1.5Ω
 (d) 3Ω , 1.5Ω and 9Ω

Q.11 If each branch of a delta circuit has impedance $\sqrt{3} Z$, then each branch of equivalent Y-circuit has impedance

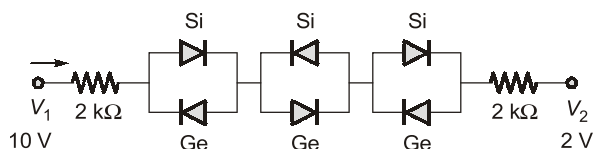
- (a) $\frac{Z}{\sqrt{3}}$ (b) Z
 (c) $2\sqrt{3} Z$ (d) $\frac{Z}{3}$

Q.12 In the circuit shown, what are the values of R_1 and R_2 when the current flowing through R_1 is 1 A and through R_2 is 5 A?



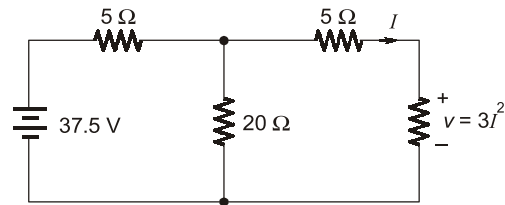
- (a) 20Ω , 8Ω (b) 12Ω , 5Ω
 (c) 8Ω , 12Ω (d) 8Ω , 20Ω

Q.13 Determine the current in the network (Assume cut-in voltage of Si is 0.7 V and Ge is 0.2 V).



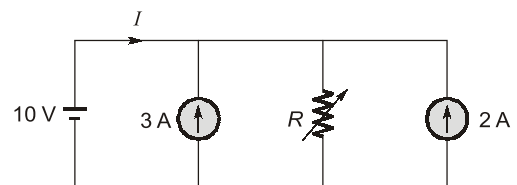
- (a) 1.6 mA (b) 1.575 mA
 (c) 1.557 mA (d) None of these

Q.14 The value of ' I ' in the circuit given below is



- (a) -5 A (b) 5 A
 (c) -2 A (d) 2 A

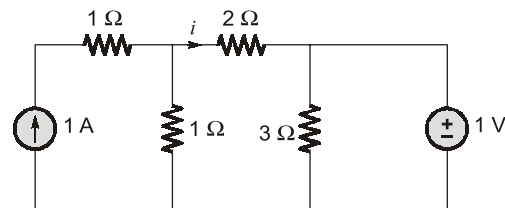
Q.15 Consider the electrical network shown below.



What is the value of R so that current I is zero?

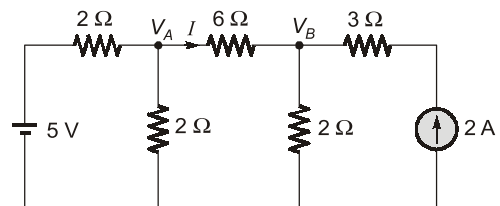
- (a) 2Ω (b) 5Ω
 (c) 4Ω (d) 3Ω

Q.16 The current i in the network given below is



- (a) 1 A (b) 2 A
 (c) 3 A (d) 0 A

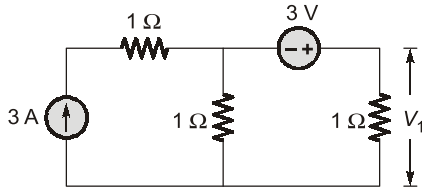
Q.17 Node voltages V_A and V_B are as shown in the circuit below



V_A and V_B are respectively

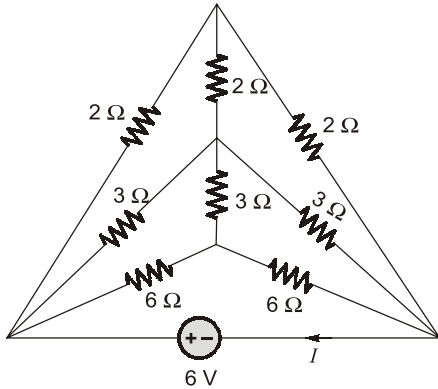
- (a) $\frac{11}{3} \text{ V}$ and $\frac{8}{3} \text{ V}$ (b) 6 V and 8 V
 (c) $\frac{24}{9} \text{ V}$ and $\frac{33}{9} \text{ V}$ (d) None of these

Q.18 The value of V_1 in the circuit shown in the given figure is



- (a) 1 V (b) 2 V
(c) 3 V (d) 4 V

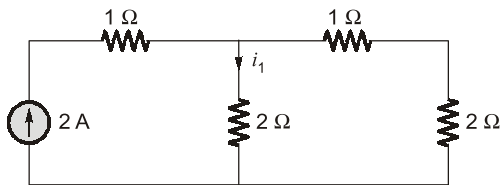
Q.19 Consider the following circuit:



What is the value of the current I in the above circuit?

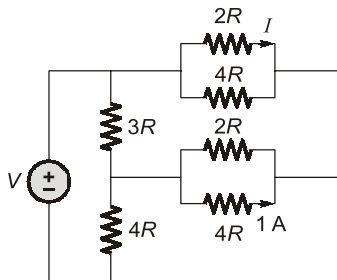
- (a) 1 A (b) 2 A
(c) 3 A (d) 4 A

Q.20 i_1 in circuit is



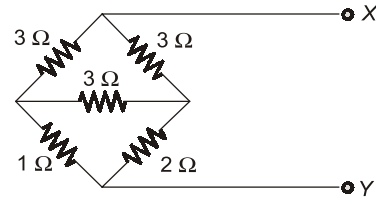
- (a) 4/5 A (b) 6/5 A
(c) 2/5 A (d) 7/5 A

Q.21 For the circuit shown in the figure, the current ' I ' is



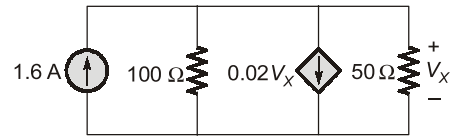
- (a) indeterminable due to inadequate data
(b) zero
(c) 4 A
(d) 8 A

Q.22 Equivalent resistance between X and Y in given circuit



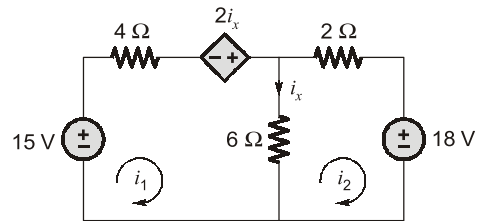
- (a) 9 Ω (b) 3 Ω
(c) 11/5 Ω (d) 5/11 Ω

Q.23 In given network find V_X ?



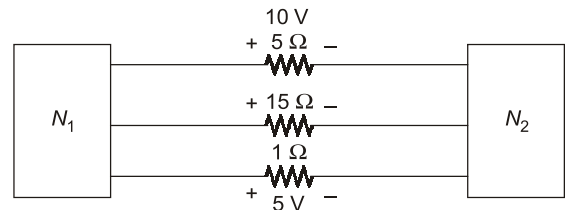
- (a) 32 V (b) -32 V
(c) 12 V (d) -12 V

Q.24 For given circuit i and i_2 is



- (a) 2.6 A, 1.4 A (b) 2.6 A, -1.4 A
(c) 1.6 A, 1.35 A (d) 1.2 A, -1.35 A

Q.25 The two electrical subnetworks N_1 and N_2 are connected through three resistors as shown in figure. The voltage across 5 Ω resistor and 1 Ω resistor are given to be 10 V and 5 V respectively. Then voltage across 15 Ω resistor is

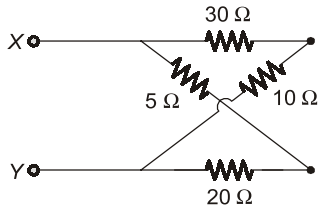


- (a) -105 V (b) 105 V
(c) -15 V (d) 15 V

Q.26 For a given voltage, four heating coils will produce maximum heat, when connected

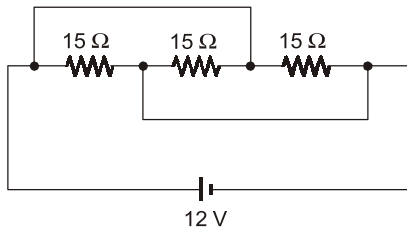
- (a) all in parallel
(b) all in series
(c) with two parallel pairs in series
(d) one pair in parallel with the other two in series

Q.36 The value of voltage source to be connected across the terminals X and Y so that drop across the $10\ \Omega$ resistor is 45 V is



- (a) 36 volts (b) 180 volts
(c) 95 volts (d) 120 volts

Q.37 For the circuit shown below, the equivalent resistance will be



- (a) $45\ \Omega$ (b) $15\ \Omega$
(c) $5\ \Omega$ (d) $7.5\ \Omega$

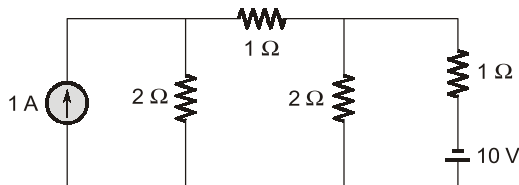
Q.38 Three resistors of $R\ \Omega$ each are connected to form a triangle. The resistance between any two terminals will be

- (a) $R\ \Omega$ (b) $3R\ \Omega$
(c) $\frac{2}{3}R\ \Omega$ (d) $\frac{3}{2}R\ \Omega$

Q.39 Kirchhoff's laws are not applicable to circuits with

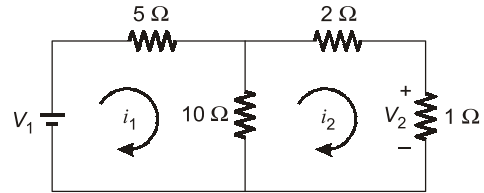
- (a) passive elements
(b) lumped parameters
(c) distributed parameters
(d) non-linear resistances

Q.40 For the circuit shown below, the current through the 10 V battery is



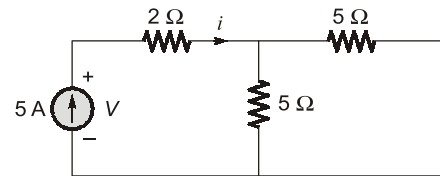
- (a) 2.36 A (b) 4.91 A
(c) -2.36 A (d) None of these

Q.41 In the circuit shown in figure below, the value of V_2/V_1 is



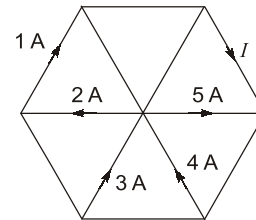
- (a) $-\frac{19}{2}$ (b) $\frac{19}{2}$
(c) 1.5 (d) $\frac{2}{19}$

Q.42 The value of V in volts for the circuit shown below is



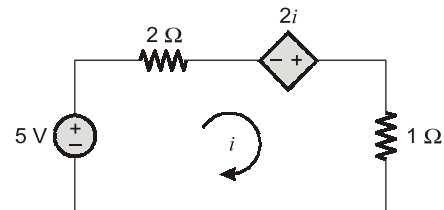
- (a) zero (b) 16.65
(c) 22.50 (d) -3.6

Q.43 The current I flowing in the given figure is



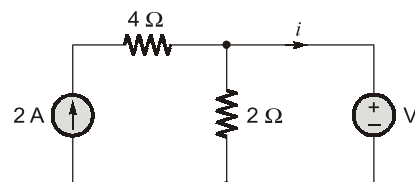
- (a) 1 A (b) 2 A
(c) 3 A (d) 4 A

Q.44 The value of dependent source for the circuit shown below is



- (a) 5 A (b) -10 V
(c) -5 A (d) 10 V

Q.45 In the circuit shown in figure below, what is the value of current i through source when $V = 4$ volts?



- (a) 1 A (b) 2 A
(c) 3 A (d) 0 A

Q.46 The number of mesh equations needed to solve an electrical network is $m = (b - n + 1)$, where b is the number of branches and n is the number of nodes in the electrical network.

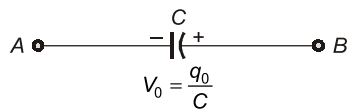
Consider the following statements related to mesh and nodal-analysis for analysing an electrical network.

1. If $m < n$, the Mesh method offers less advantages.
2. If $m > n$, i.e. when the number of parallel paths in the network is more, mesh method is preferred.

Which of the above statements is/are true?

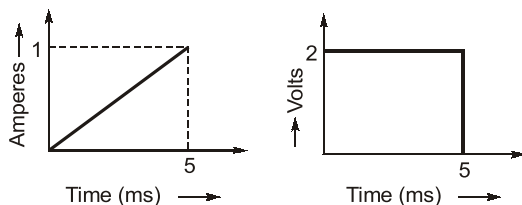
- (a) Neither 1 nor 2 (b) 1 only
(c) 2 only (d) Both 1 and 2

Q.47 The equivalent circuit of the capacitor shown below is



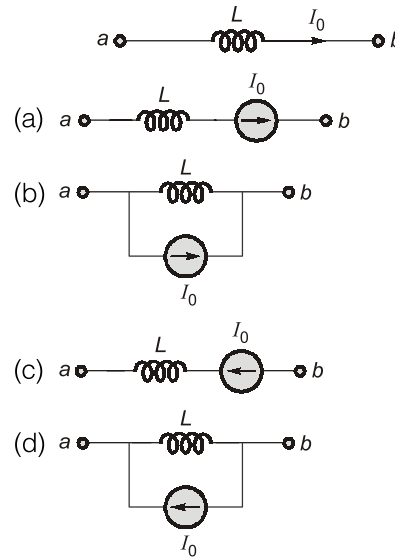
- (a)
- (b)
- (c)
- (d)

Q.48 The current and voltage profile of an element vs time has been shown in given figure. The element and its value are respectively

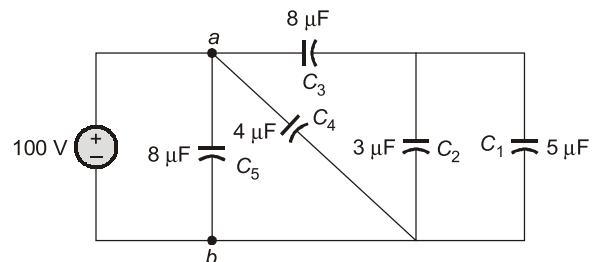


- (a) a resistor with $R = 2 \text{ m}\Omega$
(b) a capacitor with $C = 2 \text{ }\mu\text{F}$
(c) an inductor with $L = 0.5 \text{ H}$
(d) an inductor with $L = 10 \text{ mH}$

Q.49 The equivalent circuit of the inductor shown below is



Q.50 The charging time required to charge the equivalent capacitance between the given terminals $a-b$ by a steady direct current of constant magnitude of 10 A is given by



- (a) 160 μsec (b) 80 μsec
(c) 21 μsec (d) 45 μsec

Q.51 An ac voltage of 220 V is applied to a pure inductance of 50 H. If the current is 5 A, the instantaneous value of voltage and current will be respectively given by

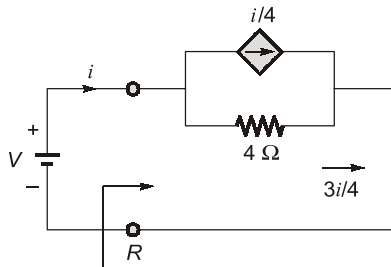
- (a) $v = 622 \sin(314t)$ Volts
 $i = 7.07 \cos(314t - 90^\circ)$ Amps
(b) $v = 311 \sin(314t)$ Volts
 $i = 14.14 \sin(314t - 90^\circ)$ Amps
(c) $v = 311 \sin(314t)$ Volts
 $i = 7.07 \sin(314t - 90^\circ)$ Amps
(d) $v = 622 \sin(314t)$ Volts
 $i = 14.14 \cos(314t - 90^\circ)$ Amps

Q.52 The voltage and current through a circuit element is $v = 100 \sin(314t + 45^\circ)$ volts and $i = 10 \sin(314t - 45^\circ)$ amps. The type of circuit element and its value will be respectively

Answers		Network Theory					
1. (b)	2. (c)	3. (c)	4. (d)	5. (b)	6. (c)	7. (c)	8. (b)
9. (a)	10. (a)	11. (a)	12. (a)	13. (b)	14. (d)	15. (a)	16. (d)
17. (c)	18. (c)	19. (c)	20. (b)	21. (d)	22. (c)	23. (a)	24. (d)
25. (a)	26. (a)	27. (c)	28. (d)	29. (d)	30. (d)	31. (d)	32. (d)
33. (d)	34. (a)	35. (a)	36. (b)	37. (c)	38. (c)	39. (c)	40. (b)
41. (d)	42. (c)	43. (a)	44. (d)	45. (d)	46. (a)	47. (d)	48. (d)
49. (b)	50. (a)	51. (c)	52. (a)	53. (d)	54. (d)	55. (a)	56. (d)
57. (c)	58. (d)	59. (c)	60. (c)	61. (d)	62. (c)	63. (d)	64. (b)
65. (c)	66. (b)	67. (c)	68. (b)	69. (c)	70. (c)	71. (a)	72. (c)
73. (c)	74. (c)	75. (b)	76. (d)	77. (d)	78. (d)	79. (a)	80. (b)
81. (c)	82. (d)	83. (b)	84. (c)	85. (d)	86. (a)	87. (c)	88. (d)
89. (d)	90. (a)	91. (b)	92. (b)	93. (d)	94. (c)	95. (b)	96. (b)
97. (d)	98. (c)	99. (c)	100. (d)	101. (b)	102. (c)	103. (d)	104. (d)
105. (a)	106. (c)	107. (b)	108. (b)	109. (c)	110. (c)	111. (a)	112. (c)
113. (c)	114. (b)	115. (a)	116. (b)	117. (a)	118. (b)	119. (c)	120. (a)
121. (c)	122. (d)	123. (c)	124. (b)	125. (a)	126. (a)	127. (d)	128. (d)
129. (d)	130. (b)	131. (b)	132. (b)	133. (c)	134. (d)	135. (d)	136. (c)
137. (c)	138. (b)	139. (c)	140. (d)	141. (d)	142. (c)	143. (d)	144. (c)
145. (b)	146. (a)	147. (d)	148. (a)	149. (c)	150. (b)	151. (c)	152. (c)
153. (b)	154. (c)	155. (a)	156. (b)	157. (c)	158. (a)	159. (b)	160. (d)
161. (a)	162. (c)	163. (b)	164. (a)	165. (c)	166. (c)	167. (b)	168. (d)
169. (c)	170. (c)	171. (a)	172. (c)	173. (c)	174. (c)	175. (d)	176. (b)
177. (b)	178. (c)	179. (b)	180. (d)	181. (a)	182. (c)	183. (d)	184. (c)
185. (d)	186. (b)	187. (c)	188. (a)	189. (c)	190. (b)	191. (a)	192. (c)
193. (c)	194. (c)	195. (b)	196. (d)	197. (b)	198. (c)	199. (a)	200. (c)
201. (b)	202. (c)	203. (c)	204. (c)	205. (c)	206. (a)	207. (b)	208. (d)
209. (a)	210. (b)	211. (a)	212. (a)	213. (a)	214. (b)	215. (b)	216. (d)
217. (d)	218. (b)	219. (c)	220. (d)	221. (a)	222. (d)	223. (c)	224. (d)
225. (b)	226. (a)	227. (d)	228. (b)	229. (a)	230. (d)	231. (d)	232. (a)
233. (a)	234. (d)	235. (d)	236. (b)	237. (b)	238. (d)	239. (a)	240. (d)
241. (d)	242. (b)	243. (a)	244. (c)	245. (b)	246. (c)	247. (c)	248. (a)
249. (a)	250. (c)	251. (d)	252. (c)	253. (b)	254. (b)	255. (b)	256. (c)
257. (c)	258. (a)	259. (c)	260. (b)	261. (c)	262. (d)	263. (d)	264. (a)
265. (b)	266. (a)	267. (a)	268. (c)	269. (c)	270. (c)	271. (d)	272. (c)
273. (b)	274. (b)	275. (b)	276. (c)	277. (b)	278. (c)	279. (b)	280. (d)
281. (d)	282. (a)	283. (d)	284. (c)	285. (d)	286. (c)	287. (b)	288. (b)
289. (a)	290. (c)	291. (c)	292. (b)	293. (b)	294. (a)	295. (a)	296. (d)
297. (c)							

Explanations

1. (b)



$$R = \frac{V}{i}$$

Using source transformation and KVL, we get,

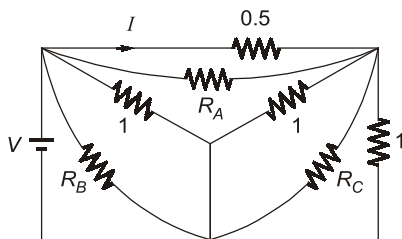
$$V + i = 4i$$

or, $V = 3i$

$$\Rightarrow R = \frac{V}{i} = 3 \Omega$$

2. (c)

Given circuit:

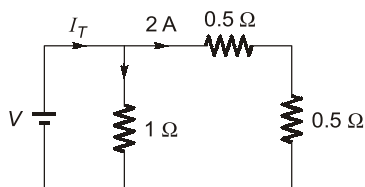


Y-Δ transforming

$$R_A = \infty$$

$$R_B = 1 \Omega$$

$$R_C = 1 \Omega$$

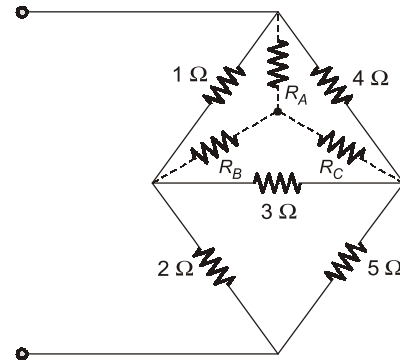


By current division rule

$$I_T = 2 \times 2 = 4 \text{ A.}$$

$$\therefore V = I_T \times R = 4 \times 0.5 = 2 \text{ V}$$

3. (c)



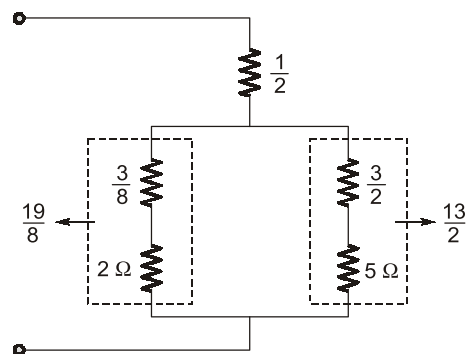
Δ-Y conversion:

$$R_A = \frac{4}{8} = \frac{1}{2}$$

$$R_B = \frac{3}{8} \Omega$$

$$R_C = \frac{12}{8} \Omega = \frac{3}{2}$$

Redrawing the circuit,



$$R_{in} = \frac{1}{2} + \left(\frac{19}{8} \parallel \frac{13}{2} \right)$$

$$R_{in} = 2.24 \Omega$$

4. (d)

Ideal voltage source keeps the terminal voltage constant so accordingly current will change and the voltage across each resistor is unchanged following superposition principle.

5. (b)

$$R = \frac{1}{10} [(10 \times 10) + (10 \times 10) + (10 \times 10)] = 30$$

7. (c)

Using Y-Δ conversion

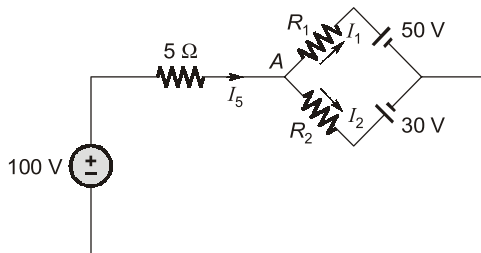
$$R_{\text{eff}} = \frac{\frac{3}{4}R \times \frac{3}{2}R}{\frac{3}{4}R + \frac{3}{2}R} = \frac{R}{2}$$

10. (a)

$$R_1 = \frac{15 \times 5}{50} = 1.5 \Omega$$

$$R_2 = \frac{30 \times 5}{50} = 3 \Omega$$

$$R_3 = \frac{15 \times 30}{50} = 9 \Omega$$

12. (a)

The current through 5 Ω resistance is

$$I_5 = I_1 + I_2 = 1 + 5 = 6 \text{ A}$$

Voltage across 5 Ω is $V_5 = 5 \times 6 = 30 \text{ V}$

The voltage at node A is

$$V_A = 100 - 30 = 70 \text{ V}$$

$$I_2 = \frac{V_A - 30}{R_2} = \frac{40}{R_2}$$

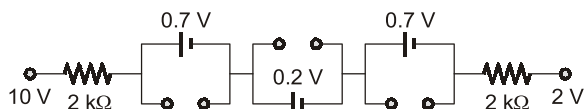
$$\therefore R_2 = \frac{40}{5} = 8 \Omega$$

$$\therefore I_1 = \frac{V_A - 50}{R_1} = \frac{20}{R_1}$$

$$\therefore R_1 = 20 \Omega$$

13. (b)

When supply is connected



$$I = \frac{10 - 0.7 - 0.2 - 0.7 - 2}{4} = 1.6 \text{ mA}$$

Note: The cut-in voltage of Si is 0.7 V and Ge is 0.2 V.

14. (d)

Using source transformation we obtain equation circuit as

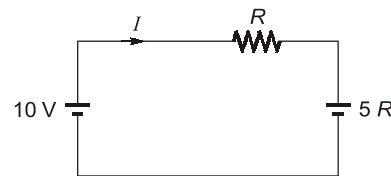
$$\therefore 3I^2 + 9I - 30 = 0$$

$$I = \frac{-9 \pm \sqrt{9^2 - 4(3)(-30)}}{2(3)} = 2, -5 \text{ A}$$

$I = 2 \text{ A}$ is possible as current must flow out of the positive terminal of only source.

15. (a)

The given circuit can be redrawn as shown below (By combining current sources).

Now, $I = 0$ (Given)

$$\text{i.e. } \frac{10 - 5R}{R} = 0$$

$$\text{or, } R = 2 \Omega$$

16. (d)

By superposition theorem

$$I = I' + I'' = \frac{1}{3} - \frac{1}{3} = 0$$

where $I' \rightarrow$ current due to 1 A source after 1 V is short circuit.

and $I'' \rightarrow$ current due to 1 V source after 1 A source is open circuit.

17. (c)Taking KCL at V_A

$$\frac{V_A - 5}{2} + \frac{V_A}{2} + \frac{V_A - V_B}{6} = 0$$

$$\therefore 3V_A - 15 + 3V_A + V_A - V_B = 0$$

$$7V_A - V_B = 15$$

... (i)

Taking KCL at V_B :

$$\frac{V_B}{2} + \frac{V_B - V_A}{6} + (-2) = 0$$

$$3V_B + V_B - V_A - 12 = 0$$

$$4V_B - V_A = 12$$

... (ii)

Solving V_A and V_B we get

$$V_A = \frac{8}{3} = \frac{24}{9} \text{ V}$$

$$V_B = \frac{11}{3} = \frac{33}{9} \text{ V}$$

18. (c)

Writing KCL at supernode

$$V_1 + V = 3 \quad \dots(1)$$

$$V - V_1 = 3 \quad \dots(2)$$

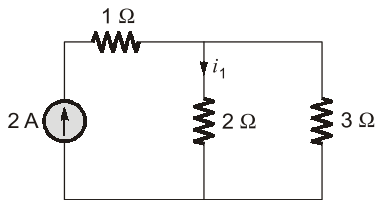
From equation (1) and (2) $2V = 6 \Rightarrow V = 3$ volt**19. (c)**

Circuit is symmetric, so using reciprocity property.

$$I = \frac{6}{2+2} + \frac{6}{3+3} + \frac{6}{6+6} = 3 \text{ A}$$

20. (b)

The equivalent network is

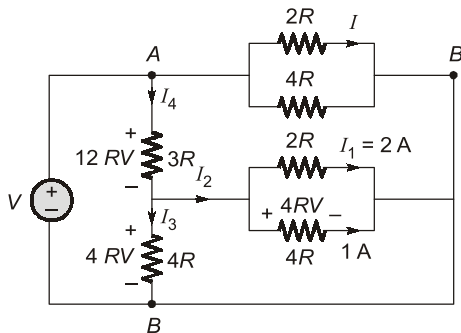


By current division rule,

$$i_1 = \frac{3}{5} \times 2 = \frac{6}{5} \text{ A}$$

21. (d)

In given circuit voltage and current shown



$$I_1 = \frac{4R}{2R} = 2 \text{ A}$$

$$I_2 = 2 + 1 = 3 \text{ A}$$

$$I_3 = \frac{4R}{4R} = 1 \text{ A}$$

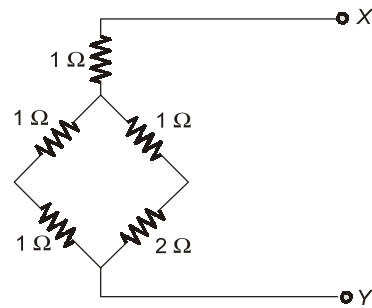
$$I_4 = I_2 + I_3 = 4 \text{ A}$$

$$V_{AB} = 12RV + 4RV = 16RV$$

$$I = \frac{16RV}{2R} = 8 \text{ A}$$

 \Rightarrow

$$I = 8 \text{ A}$$

22. (c)Convert 3Ω , Δ resistors network into Y network than circuit is

$$\Rightarrow \frac{2 \times 3}{2+3} + 1 = \frac{11}{5}$$

23. (a)

By the nodal equation

$$\frac{V_X}{50} + \frac{V_X}{100} + 0.02V_X = 1.6$$

$$V_X = 32 \text{ V}$$

24. (d)

$$i_x = i_1 - i_2$$

$$15 = 4i_1 - 2(i_1 - i_2) + 6(i_1 - i_2)$$

$$\Rightarrow 8i_1 - 4i_2 = 15$$

$$\Rightarrow -18 = 2i_2 + 6(i_2 - i_1)$$

$$\Rightarrow 3i_1 - 4i_2 = 9$$

$$i_1 = 1.2 \text{ A and } i_2 = -1.35 \text{ A}$$

25. (a)Current coming to N_2 must be equal to the current leaving N_2 therefore current in 15Ω resistance is 7 amp from N_2 to N_1

$$V_5 = -15 \times 7 = -105 \text{ V}$$

26. (a)

Maximum heat produced is

$$P = \frac{V^2}{R_{eq}}$$

For P to be maximum, R_{eq} should be minimum which is minimum if all four coils are connected in parallel.**27. (c)**

We know that,

$$R \propto \frac{l}{A}$$

and $L = \frac{N^2 \mu A}{l}$ or $L \propto \frac{N^2}{l}$

when coil is cut into two equal halves,

$$l' = \frac{l}{2} \text{ and } N' = \frac{N}{2}$$

(Area of cross-section = constant)

So, $\frac{R'}{R} = \frac{l'}{l} = \frac{l/2}{l}$ or $\left[R' = \frac{R}{2} \right]$

Also, $\frac{L'}{L} = \left(\frac{N'}{N} \right)^2 \times \left(\frac{l}{l'} \right)$

$$= \left(\frac{N/2}{N} \right)^2 \times \left(\frac{l}{l/2} \right)$$

$$= \frac{1}{4} \times 2 = \frac{1}{2}$$

So, $\left[L' = \frac{L}{2} \right]$

Hence, new values of resistance and inductance which are reconnected in parallel is

$$R_{eq} = R' || R' = \frac{R'}{2} = \frac{R}{4} \Omega$$

and $L_{eq} = L' || L' = \frac{L'}{2} = \frac{L}{4} \text{ H}$

28. (d)

We have; $P_1 = I_1^2 R$

or, $I_1 = \sqrt{\frac{P_1}{R}}; P_1 = 1 \text{ W}$

$$P_2 = I_2^2 R$$

or, $I_2 = \sqrt{\frac{P_2}{R}}; P_2 = 4 \text{ W}$

When both the sources are present, net current through R will be

$$I = (I_2 - I_1)$$

[as polarity of V_1 is reverse]

So, power loss in R is

$$P = I^2 R = (I_2 - I_1)^2 R$$

$$= \left(\sqrt{\frac{P_2}{R}} - \sqrt{\frac{P_1}{R}} \right)^2 \times R$$

$$= \left(\sqrt{P_2} - \sqrt{P_1} \right)^2$$

$$= (\sqrt{4} - \sqrt{1})^2 = (2 - 1)^2$$

$$= 1 \text{ Watt}$$

29. (d)

Susceptance is the imaginary part of admittance,

$$Y = \frac{1}{Z} = \frac{1}{R + jX_L} = \frac{R - jX_L}{R^2 + X_L^2}$$

$$= \frac{R - jX_L}{Z^2}$$

or, $Y = \left[\frac{R}{Z^2} - j \frac{X_L}{Z^2} \right] = [G - jS]$

Here, $G = \text{Conductance}$

$$= \frac{R}{Z^2} \text{ mho}$$

and $S = \text{Susceptance}$

$$= \frac{X_L}{Z^2} \text{ Simen}$$

30. (d)

Given, power consumed is

$$P = I^2 R_{eq}$$

or, $I = \sqrt{\frac{P}{R_{eq}}} = \sqrt{\frac{10}{5}} = \sqrt{2} \text{ A}$

Also, $I = \frac{V}{|Z|}$ or $\sqrt{2} = \frac{(50/\sqrt{2})}{|Z|}$

or, $|Z| = 25 \Omega$

or, $\sqrt{X_L^2 + 15^2} = 25$

or, $X_L = \sqrt{25^2 - 15^2} = 20 \Omega$

Hence, p.f. of given circuit is

$$\cos \phi = \frac{R_{eq}}{|Z|} = \frac{15}{25} = \frac{3}{5} = 0.6 (\text{lag})$$

31. (d)

For series connection,

$$R_{eq} = R_1 + R_2$$

or, $\frac{R_{eq}}{V_r^2} = \frac{R_1}{V_r^2} + \frac{R_2}{V_r^2}$

or, $\frac{1}{P_{eq}} = \frac{1}{P_1} + \frac{1}{P_2}$

or, $P_{eq} = \frac{P_1 P_2}{P_1 + P_2}$

Given, $P_1 = P_2 = 1000 \text{ W}$

$\therefore P_{eq} = 500 \text{ Watt}$

32. (d)

Assertion is false because a network in which the circuit elements like resistance, inductance etc. cannot be physically separated for analysis purposes, is called a distributed network. The best example of a distributed network is a transmission line.

Reason is true because most of the electric networks are lumped in nature.

33. (d)

The equivalent resistance of the given circuit is

$$R = R_{eq} \\ = \left(\frac{mr}{2} + \frac{r}{m} \right) = \left(\frac{m^2 r + 2r}{2m} \right)$$

Now, $I = \frac{V}{R}$

Hence, for current I to be maximum, R should be minimum.

i.e. $\frac{dR}{dm} = 0$

or, $\frac{2m[2mr+0] - (m^2r+2r) \times 2}{(2m)^2} = 0$

or, $2m(2mr) - 2(m^2r+2r) = 0$

or, $4m^2 - 2m^2 - 4 = 0$

or, $2m^2 - 4 = 0$

or $m = \sqrt{2}$

34. (a)

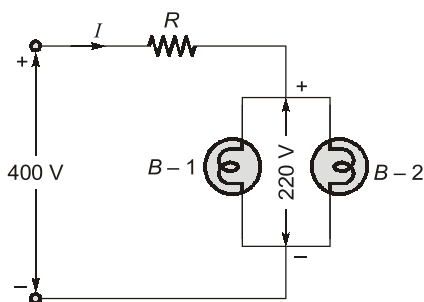
Total power drawn from the circuit

$$= 2 \times 100 = 200 \text{ watts}$$

Hence, supply current is

$$I = \frac{200}{220} = 0.91 \text{ A}$$

Let R be the series resistance to be inserted in the circuit such that the voltage across the bulbs is 220 V.



Applying KVL, we get

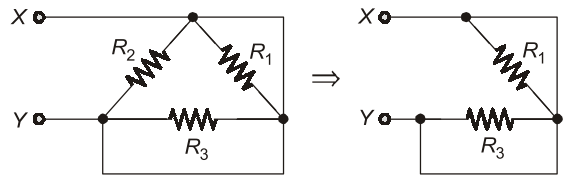
$$400 = IR + 220$$

or, $IR = 400 - 220 = 180$

or, $R = \frac{180}{I} = \frac{180}{0.91} = 197.8 \Omega$
 $\approx 198 \Omega$

35. (a)

Converting the star-connected resistors into Δ equivalent, the given circuit is reduced as shown below.



Here, $R_1 = 1 + 0 + \frac{1 \times 0}{1} = 1 \Omega$

$$R_2 = 1 + 1 + \frac{1 \times 1}{0} = \infty \Omega$$

(i.e. open circuit)

$$R_3 = 1 + 0 + \frac{1 \times 0}{1} = 1 \Omega$$

Hence, equivalent resistance between terminals X and Y is

$$R_{eq} = R_{XY} = \frac{0 \times R_1}{0 + R_1} + \frac{0 \times R_3}{0 + R_3} \\ = 0 + 0 = 0 \Omega$$

36. (b)

Let the required voltage be V .

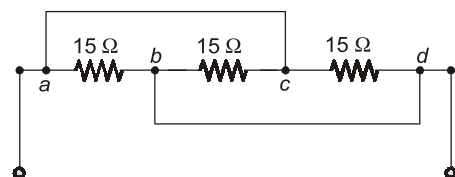
Then, voltage across 10Ω resistor

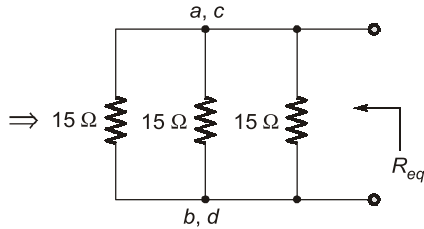
$$= \left(\frac{10}{30+10} \right) V = 45$$

or, $V = \frac{45 \times 40}{10} = 180 \text{ volts}$

Hence, required voltage is

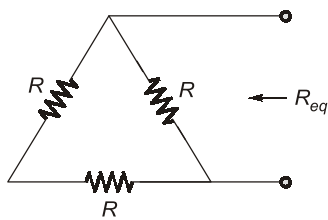
$$V = 180 \text{ volts}$$

37. (c)



Here, a and c are at equipotential.
Also, b and d are at equipotential.

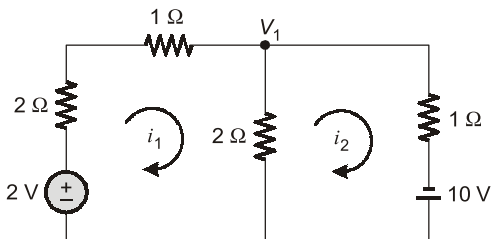
$$\therefore R_{eq} = \frac{15}{3} = 5 \Omega$$

38. (c)

$$R_{eq} = 2R \parallel R = \frac{2}{3} R$$

40. (b)

Using source transformation, first we convert the current source into an equivalent voltage source



Applying KVL in loop-1, we get

$$-2 + 3i_1 + (i_1 - i_2) \cdot 2 = 0$$

$$\text{or, } 5i_1 - 2i_2 = 2 \quad \dots(i)$$

Applying KVL in loop-2, we get

$$2(i_2 - i_1) + i_2 - 10 = 0$$

$$\text{or, } 2i_1 - 3i_2 = 10 \quad \dots(ii)$$

On solving equations (i) and (ii), we get

$$i_1 = 2.36 \text{ A and } i_2 = 4.91 \text{ A}$$

Hence, the current through the battery of 10 V is

$$i_2 = 4.91 \text{ A}$$

41. (d)

Applying KVL in the loops, we get

$$5i_1 + (i_1 - i_2)10 = V_1$$

$$\text{or, } 15i_1 - 10i_2 = V_1 \quad \dots(i)$$

$$\text{Also, } 2i_2 + i_2 \times 1 + (i_2 - i_1) \times 10 = 0$$

$$\text{or, } -10i_1 + 13i_2 = 0 \quad \dots(ii)$$

On solving equations (i) and (ii), we get

$$i_2 = \frac{10}{95} V_1$$

$$\text{Also, } V_2 = i_2 \times 1 = i_2 = \frac{10}{95} V_1$$

$$\text{or, } \frac{V_2}{V_1} = \frac{10}{95} = \frac{2}{19}$$

42. (c)

The equivalent resistance across the 5 A current source is

$$R_{eq} = 5 \parallel 5 + 2 = \frac{5}{2} + 2$$

$$= 2.5 + 2 = 4.5 \Omega$$

$$\therefore V = R_{eq} \times 5 = 4.5 \times 5 = 22.5 \text{ volts}$$

44. (d)

Applying KVL in the loop,

$$5 = 2i - 2i + i \text{ or } i = 5 \text{ A}$$

\therefore Value of dependent source

$$= 2i = 2 \times 5 = 10 \text{ volt}$$

45. (d)

Using nodal analysis,

$$-2 + \frac{V}{2} + i = 0$$

$$\text{or, } i = \left(-2 + \frac{4}{2} \right) = -2 + 2 = 0 \text{ A}$$

$$\therefore i = 0 \text{ A}$$

47. (d)

Due to initial condition, at $t = 0$ capacitor will act as a constant voltage source (at $t = 0$, capacitor acts as short-circuit). Hence, option (d) is correct.

48. (d)

\Rightarrow Since V is not proportional to R therefore, the element can't be a resistor.

\Rightarrow At $t = 5 \text{ ms}$, even if $i \neq 0$, the element behaves as a short circuit therefore, the element can't be a capacitor (since at $t = 0$ only capacitor behaves as short circuit).

\Rightarrow The current at $t = 0$ is zero and at $t = 5 \text{ ms}$ voltage across the element is zero therefore, the element must be an inductor (at $t = 0$, an inductor acts as open circuit and at $t = \infty$ it behaves as short circuit).

From the given voltage and current profile, we have

$$\frac{di}{dt} = \frac{1}{5 \times 10^{-3}} = 0.2 \times 10^3 \text{ A/sec}$$

and $v(\text{initial}) = 2 \text{ volt}$

$$\therefore v = L \frac{di}{dt}$$

$$\text{or, } L = \frac{v}{\left(\frac{di}{dt}\right)} = \frac{2}{0.2 \times 10^3} = 10 \text{ mH}$$

50. (a)

Equivalent capacitance between terminals $a-b$ is

$$\begin{aligned} C_{eq} &= C_{a-b} \\ &= \left[\frac{(C_1 + C_2)C_3}{C_1 + C_2 + C_3} \parallel C_4 \right] \parallel C_5 \\ &= 16 \mu\text{F} \end{aligned}$$

$$\begin{aligned} \therefore Q_{net} &= C_{a-b} \times V \\ &= 16 \times 10^{-6} \times 100 \\ &= 1600 \mu\text{C} \end{aligned}$$

Hence, the charging time required is

$$\begin{aligned} t &= \frac{Q_{net}}{I} = \frac{1600 \times 10^{-6}}{10} \\ &= 160 \mu\text{sec} \end{aligned}$$

51. (c)

Maximum value of current,

$$I_m = \sqrt{2} I = \sqrt{2} \times 5 = 7.07 \text{ A}$$

$$\begin{aligned} \omega &= 2\pi f = 2\pi \times 50 \\ &= 314 \text{ rad/sec} \end{aligned}$$

$$\therefore i = I_m \sin \omega t = 7.07 \sin 314t \text{ A}$$

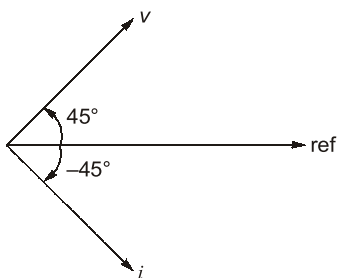
$$\begin{aligned} \text{Also, } V_m &= \sqrt{2} V = \sqrt{2} \times 220 \\ &= 311 \text{ volts} \end{aligned}$$

Assuming voltage as the reference phasor,

$$v = 311 \sin 314t \text{ Volt}$$

$$\text{and } i = 7.07 \sin (314t - 90)^\circ \text{ Amps}$$

52. (a)



The phase difference between v and i is

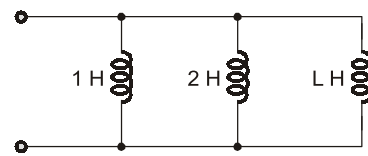
$$\phi = (45^\circ + 45^\circ) = 90^\circ$$

Since v leads i therefore, the circuit element is an inductor.

$$\therefore X_L = \frac{V_m}{I_m} = \frac{100}{10} = 10 \Omega = 2\pi fL$$

$$\begin{aligned} \text{or, } L &= \frac{X_L}{2\pi f} = \frac{10}{2\pi \times 50} \text{ H} \\ &= 31.8 \text{ mH} \end{aligned}$$

53. (d)



Equivalent inductance,

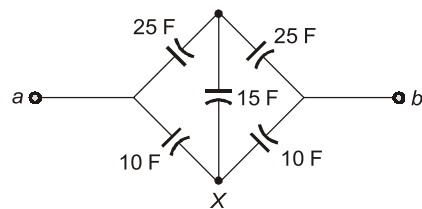
$$\begin{aligned} L_{eq} &= (1 \parallel 2 \parallel L) = \left(\frac{2}{3} \parallel L \right) \\ &= \left(\frac{\frac{2}{3}L}{L + \frac{2}{3}} \right) = \left(\frac{2/3}{1 + \frac{2}{3L}} \right) \end{aligned}$$

L_{eq} will be maximum of $L \rightarrow \infty$.

$$\text{Hence, } (L_{eq})_{\max} = \frac{2}{3} \text{ H}$$

54. (d)

The given circuit can be redrawn as shown below.



The star at point X can be replaced by equivalent delta having delta branches as C_1 , C_2 and C_3 as shown below.

