

UPPSC-AE

2023

Uttar Pradesh Public Service Commission

Combined State Engineering Services Examination
Assistant Engineer

Civil Engineering

**Fluid Mechanics and Machines
including OCF and Hydro Power
Engineering**

Well Illustrated **Theory** *with*
Solved Examples and Practice Questions



MADE EASY
Publications

Note: This book contains copyright subject matter to MADE EASY Publications, New Delhi. No part of this book may be reproduced, stored in a retrieval system or transmitted in any form or by any means. Violators are liable to be legally prosecuted.

Fluid Mechanics and Machines including OCF and Hydro Power Engineering

Contents

UNIT	TOPIC	PAGE NO.
Section-A		
1.	Fluid Properties -----	1-21
2.	Fluid Statics -----	22-68
3.	Fluid Kinematics -----	69-91
4.	Fluid Dynamics -----	92-115
5.	Flow Through Pipes -----	116-134
6.	Flow Measurements -----	135-144
7.	Laminar Flow -----	145-155
8.	Turbulent Flow -----	156-164
9.	Boundary Layer Theory -----	165-174
10.	Dimensional Analysis -----	175-189
11.	Forces on Submerged Bodies -----	190-197
Section-B		
12.	Open Channel Flow -----	198-258
Section-C		
13.	Hydraulic Machine and Hydropower -----	259-297



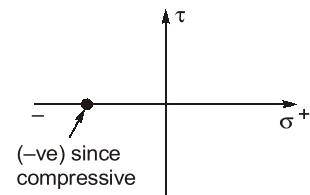
Fluid Properties

1.1 Fluid Mechanics

- Fluid mechanics is the branch of engineering science which involves the study of fluids and forces on them.
- In fluid mechanics we study the fluid behaviour at rest and in motion.
 - (i) Study of fluid at rest \rightarrow fluid statics.
 - (ii) Study of fluid in motion when forces responsible for motion are not considered \rightarrow fluid kinematics.
 - (iii) Study of fluid in motion considering the forces responsible for motion \rightarrow fluid dynamics.
- Fluid mechanics is a branch of continuum mechanics, a subject which models matter without using the information that it is made out of atoms, that is, it models matter from a macroscopic view point rather than from microscopic.

1.2 Fluid

- A substance in liquid or gaseous phase is referred to as fluid, if they are capable of deforming continuously under the action of shear stress, however small the shear stress may be.
- For a static fluid there is no shear force.
- Since there is no shear force in static fluid hence the Mohr's circle is a point.



NOTE: In solids stress is proportional to strain but in fluid stress is proportional to strain rate.

1.2.1 Types of Fluid

1.2.1.1 Ideal Fluid (Perfect Fluid)

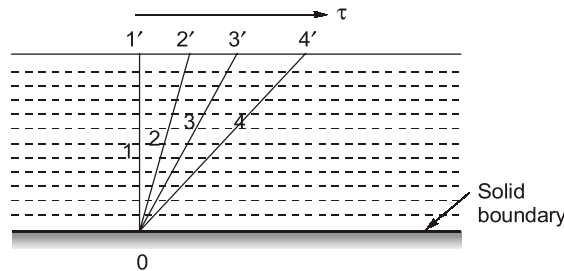
- Non-viscous, friction less and incompressible.
- Does not offer shear resistance against flow.
- Bulk modulus is infinite
- Used in mathematical analysis and flow problems.
- No such fluid exist in practical situation.

1.2.1.2 Real Fluid

- Possess the properties such as viscosity, surface tension and compressibility.
- Offers resistance against flow.

1.3 Fluid Continuous and Continuum Concept

- In a fluid system, the intermolecular spacing between the fluid particles is treated as negligible and the entire fluid mass system is assumed as continuous distribution of mass, which is known as continuum.
- The continuous deformation of fluid under the action of shear stress causes a flow. Figure below shows a shear stress (τ) is applied at any location in a fluid, the element 011' which is initially at rest, will move to 022', then to 033' and to 044' and soon.



- It is a kind of idealization of the properties of the matter for flow analysis.
- Any matter is composed of several molecules continue concept assumes a continuous distribution of mass within the matter with no empty space or voids.
- **Mean free path:** Statistical average distance, which molecules of the same fluid travel between collisions.
- Mean free path is large in comparison to some characteristics length, gas cannot be treated as continuous medium and instead it is analysed by “molecular theory”.
- To describe the degree of departure from continuum, a non-dimensional number known as Knudsen number (K_n) is used

$$K_n = \frac{\lambda}{L} = \frac{\text{Mean free path}}{\text{Characterastics length of flow}}$$

- If $K_n > 0.01$, the concept of continuum does not hold good.
- Fluid can be treated as continuous when $K_n < 0.01$, This holds good for fluid mechanics.

1.4 Properties of Fluids

- (i) **Mass density (ρ):** It is the mass of the matter occupied in unit volume at a standard temperature and pressure. It is denoted by ' ρ '.

$$\rho = \frac{m}{V} \cdot (\text{kg/m}^3)$$

Matter	Mass density, ρ (kg/m ³)
Air	1.2
Water	1000
Mercury	13600
Steel	7850
Wood	600

(ii) **Specific weight (γ , W or ρg):** Weight of the matter per unit volume

$$W = \gamma = \frac{W}{V} = \frac{mg}{V} = \rho g \cdot \left(\frac{N}{m^3} \right)$$

- It is not absolute quantity and varies from place to place.
- It is also known as weight density.

Matter	Specific weight; $\gamma = \rho g$
Air	11.77 N/m ³
Water	9.81 kN/m ³

(iii) **Specific volume (V_s):**

- Volume occupied by unit mass of fluid.

$$V_s = \frac{1}{\rho} (\text{m}^3/\text{kg})$$

- It is reciprocal of mass density.

(iv) **Specific gravity (S) or relative density:**

- It is the ratio of specific weight (or mass density) of a fluid to the specific weight (or mass density) of a standard fluid at a specified temperature.

(Usually water at 4°C)

$$S = \frac{\rho}{\rho_{\text{water}}} = \frac{\gamma}{\gamma_{\text{water}}}$$

- Units: No units

Matter	Specific gravity (S)
Air	0.0012
Water	1.0
Wood	0.6



Example - 1.1 Three litres of petrol weighs 23.7 N. Calculate the mass density, specific weight, specific volume and specific gravity of petrol.

Solution:

Mass density of petrol $\rho_p = \frac{\text{Mass}}{\text{Volume}} = \frac{\left(\frac{23.7}{9.81} \right)}{3.0} = 0.805 \text{ kg/litres} = 805 \text{ kg/m}^3$

Mass density of water $(\rho_w) = 1000 \text{ kg/m}^3$

Specific gravity of petrol, $S = \frac{\rho_p}{\rho_w} = \frac{805}{1000} = 0.805$

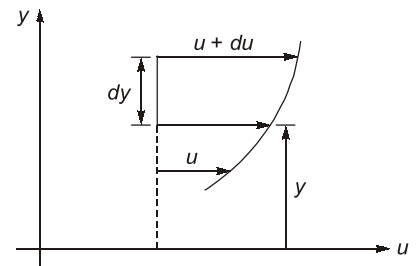
Specific weight of petrol, $(\gamma) = \rho g = 805 \times \frac{9.81}{1000} \text{ kN/m}^3 = 7.9 \text{ kN/m}^3$

Specific volume of petrol, $V_s = \frac{1}{\rho_p} = \frac{1}{805} = 1.242 \times 10^{-3} \text{ m}^3/\text{kg}$

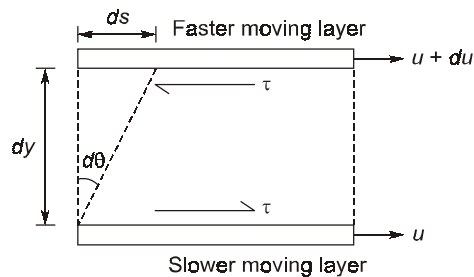
NOTE: If specific gravity, $S < 1 \Rightarrow$ fluid is lighter than water.

1.5 Viscosity

- It is a measure of resistance of fluid to deformation. It is due to cohesion and molecular momentum exchange between fluid layers and as flow occurs, these effects appears as shearing stresses between the moving layers.
- Suppose one layer of fluid is moving with respect to the other layer by a velocity = du and vertical gap between two layers be dy .
- Upper layer which is moving faster tries to draw the lower slowly moving layer along with it.



Similarly, as a reaction to this, the lower layer tries to retard the upper one. Thus there exists a shear between the two layers as shown below.



- In time dt , the top layer will move with respect to the bottom layer by a distance $ds = du \cdot dt$.

Hence,

$$\frac{ds}{dy} = d\theta = \text{shear strain}$$

$$\frac{du \cdot dt}{dy} = d\theta$$

$$\Rightarrow \frac{d\theta}{dt} = \frac{du}{dy} \quad \dots(i)$$

\Rightarrow Rate of change of shear strain $\left(\frac{d\theta}{dt}\right) = \text{Velocity gradient} \left(\frac{du}{dy}\right)$

- On the basis of relation between the applied shear stresses and the flow or rate of deformation, fluids can be categorized as Newtonian and Non-Newtonian fluid.
- Newtonian fluids:** Fluid which obeys Newton's law of viscosity are known as Newtonian fluid.

1.5.1 Newton's Law of Viscosity

The fluid for which rate of deformation is linearly proportional to shear stress.

Thus, for Newtonian fluid

$$\tau \propto \frac{d\theta}{dt}$$

τ = Shear stress opposing the movement of fluid

$$\therefore \tau \propto \frac{du}{dy} \quad (\text{from equation (i)})$$

$$\therefore \tau = \mu \cdot \frac{du}{dy}$$

μ = Absolute viscosity, 'or' coefficient of viscosity 'or' dynamic viscosity

- Water, air and gasoline are Newtonian under normal conditions.

1.5.2 Dimensions and Units

Dynamic Viscosity (μ):

SI system: Pa-sec, or $\frac{\text{N-sec}}{\text{m}^2}$ or $\frac{\text{kg}}{\text{m-sec}}$.

CGS system:

$$1 \text{ poise} = \frac{\text{Dyne-sec}}{\text{cm}^2} \left\{ \text{Dyne} = \frac{\text{gm-cm}}{\text{sec}^2} \right\}$$

$$\therefore 1 \text{ poise} = \frac{\text{gm}}{\text{cm-sec}}$$

Conversion:

$$1 \text{ poise} = \frac{1}{10} \text{ Pa-sec}$$

Dimensions of dynamic viscosity: $[ML^{-1} T^{-1}]$

$$(\mu)_{\text{water}} = 10^{-3} \frac{\text{N-sec}}{\text{m}^2} = 1 \text{ centipoise}$$

$$(\mu)_{\text{air}} = 1.81 \times 10^{-5} \frac{\text{N-sec}}{\text{m}^2}$$

(Both at 20° and at standard atmospheric pressure)

NOTE: Water is nearly 55 times viscous than air.

1.5.3 Kinematic Viscosity (ν)

$$\nu = \frac{\text{Dynamic viscosity}}{\text{Mass density}} = \frac{\mu}{\rho}$$

Units:

SI system - m^2/sec

CGS system - cm^2/sec or stoke

$$1 \text{ stoke} = \text{cm}^2/\text{sec} = 10^{-4} \text{ m}^2/\text{sec}$$

Dimension: $[L^2 T^{-1}]$

At 20°C and at standard atmospheric pressure

$$\nu_{\text{water}} = 1 \times 10^{-6} \text{ m}^2/\text{sec}$$

$$\nu_{\text{air}} = 15 \times 10^{-6} \text{ m}^2/\text{sec}$$

NOTE: Kinematic viscosity of air is about 15 times greater than the corresponding value of water.

1.5.4 Effect of Temperature and Pressure on Viscosity**1.5.4.1 Effect of Temperature****Dynamic Viscosity (μ)***In Liquids:*

- In case of liquids, viscosity is due to molecular cohesion.

Temp. $\uparrow \Rightarrow$ Intermolecular force of attraction $\downarrow \Rightarrow \mu \downarrow$ i.e., $T \uparrow \Rightarrow \mu \downarrow$

$$\text{or, } \mu_{\text{liq}} = \frac{\mu_0}{1 + \alpha t + \beta t^2} \quad \alpha \text{ and } \beta \text{ are constant, } t = \text{temp. in } ^\circ\text{C}$$

In gases:

- In case of gases viscosity is due to molecular collision.

Temp. \uparrow Randomness of motion of molecules \uparrow \Rightarrow Resistance in the path of molecules \uparrow $\Rightarrow \mu \uparrow$ i.e., $T \uparrow \Rightarrow \mu \uparrow$

$$\text{or } \mu_{\text{gas}} = \mu_0 + \alpha t - \beta t^2$$

Kinematic Viscosity (ν)*In liquids:*Temp. $\uparrow \Rightarrow \nu \downarrow$ *In gases:*Temp. $\uparrow \Rightarrow \nu \uparrow$ **1.5.4.2 Effect of Pressure**

- For liquids, viscosity is practically independent of pressure except at extremely high pressure.

i.e., Dynamic viscosity (μ) ($P \uparrow \Rightarrow \mu$ remains same)Kinematic viscosity (ν) ($P \uparrow \Rightarrow \nu$ remains same)

- For gases, dynamic viscosity is generally independent of pressure particularly (at low to moderate pressure) but kinematic viscosity decreases as density is proportional to pressure.

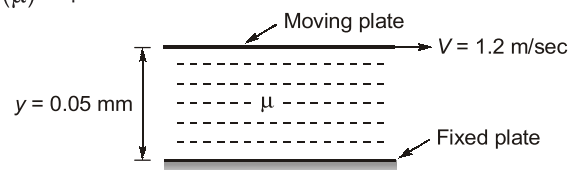
i.e., Dynamic viscosity (μ) ($P \uparrow \Rightarrow \mu$ remain same)Kinematic viscosity (ν) ($P \downarrow \Rightarrow \nu \downarrow$)

Example - 1.2 A plate 0.05 mm distant from a fixed plate moves at 1.2 m/sec and requires a shear stress of 2.2 N/m² to maintain this velocity. Find the viscosity of the fluid between the plates.

Solution:Let μ be the viscosity of fluid between the plates.Given, $V = 1.2 \text{ m/sec}$, $y = 0.05 \text{ mm} = 0.05 \times 10^{-3} \text{ m}$ Shear stress (τ) = 2.2 N/m², To find (μ) = ?

By Newton's law of viscosity we know that

$$\tau = \mu \cdot \frac{V}{y}$$



$$2.2 = \mu \times \frac{1.2}{0.05 \times 10^{-3}}$$

$$\mu = \frac{2.2 \times 0.05 \times 10^{-3}}{1.2} = 9.16 \times 10^{-5} \text{ N-sec/m}^2$$

Non-Newtonian Fluids

- These do not follow Newton's law of viscosity. The relation between shear stress and velocity gradient is

$$\tau = A \left(\frac{du}{dy} \right)^n + B$$

where A and B are constants depending upon type of fluid and condition of flow.

- The study of Non-Newtonian fluid is known as Rheology.

- (i) For Dilatant Fluids: $n > 1$ and $B = 0$,

Ex. Butter, Quick sand, Rice starch, Sugar in H_2O

- (ii) For Bingham Plastic Fluids: $n = 1$ and $B \neq 0$

Ex. Sewage sludge, Drilling mud, Tooth paste, Gel.

These fluids always have certain minimum shear stress before they yield.

- (iii) For Pseudoplastic Fluids: $n < 1$ and $B = 0$

Ex. Paper pulp, Rubber solution, Lipsticks, Paints, Blood, Polymetric solutions, milk, etc.

- (iv) For Thixotropic Fluids: $n < 1$ and $B \neq 0$

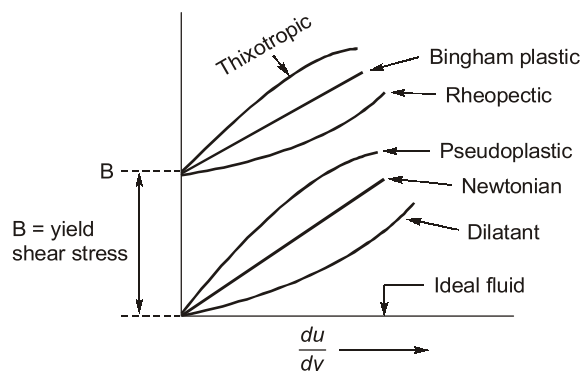
Viscosity increases with time.

Ex. Printers ink and Enamels.

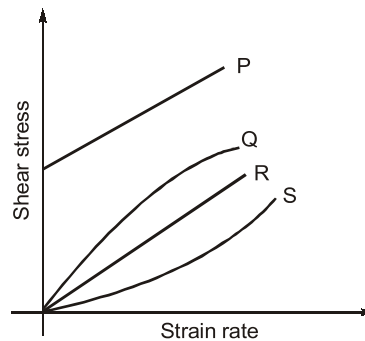
- (v) For Rheopectic Fluids: $n > 1$ and $B \neq 0$

Viscosity decreases with time.

Ex. Gypsum solution in water and Bentonite solution.



Example - 1.3 The Rheological diagram depicting the relation between shear stress and strain rate for different types of fluids is shown in figure below.



The most suitable relation for flow of toothpaste being squeezed out of the tube is given by the curve:

- (a) P (b) Q
(c) R (d) S

Ans. (a)



Example - 1.4 If the shear stress ' τ ' and shear strain rate (du/dy) relationship of a material is plotted with τ on the y -axis and du/dy on the x -axis, the behaviour of an ideal fluid is exhibited by:

- (a) a straight line passing through the origin and inclined to the x -axis
(b) the positive x -axis
(c) the positive y -axis
(d) a curved line passing through the origin

Ans. (b)



Example - 1.5 An oil of kinematic viscosity having $1.25 \times 10^{-4} \text{ m}^2/\text{sec}$ and a specific gravity of 0.80. What is its dynamic (absolute) viscosity in $\text{kg}/\text{m}\cdot\text{sec}$?

- (a) 0.08 (b) 0.10
(c) 0.125 (d) 1.0

Ans. (b)

Given,

$$\nu = 1.25 \times 10^{-4} \text{ m}^2/\text{sec}$$

$$S = 0.8$$

\therefore

$$\rho = 0.8 \times \rho_w = 0.8 \times 1000 = 800 \text{ kg}/\text{m}^3$$

To find μ

We know that,

$$\nu = \frac{\mu}{\rho}$$

$$1.25 \times 10^{-4} = \frac{\mu}{800}$$

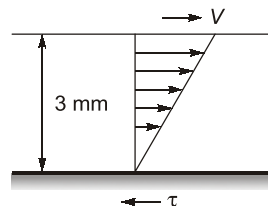
$$\mu = 1.25 \times 10^{-4} \times 800$$

$$\mu = 0.10 \text{ kg}/\text{m}\cdot\text{sec}$$



Student's Assignments

- Q.1** A fluid is defined as a substance that
- has same shear stress at all points
 - can deform indefinitely under the action of the smallest shear force also
 - has the small shear stress in all directions
 - is practically incompressible
- Q.2** If 5.66 m^3 of oil weighs 4675 kg, then its mass density, specific weight and specific gravity respectively are
- 841.87 kg/m^3 ; 826.26 kg/m^3 ; 0.842
 - 8.26 kg/m^3 ; 841 kg/m^3 ; 8.42
 - 841.87 kg/m^3 ; 841 kg/m^3 ; 8.42
 - None of these
- Q.3** Viscosity is a property that manifests
- at fluid-solid boundaries only
 - between two adjacent fluid layer in relative motion
 - in uniform incompressible flows
 - only in turbulent flow
- Q.4** Dynamic viscosity has following units?
- $\frac{\text{kg-m}}{\text{sec}}$
 - $\frac{\text{kg}}{\text{m-sec}}$
 - $\frac{\text{N-S}}{\text{m}^2}$
 - Poise
 - $\frac{\text{Dyne-sec}}{\text{cm}^2}$
- (i) and (iii)
 - (i), (iii) and (iv)
 - (ii), (iii), (iv) & (v)
 - (i), (iii), (iv) & (v)
- Q.5** At room temperature, the dynamic and kinematic viscosity of water:
- are both greater than that of air
 - are both less than that of air
 - are respectively greater than and less than that of air
 - are respectively less than and greater than that of air
- Q.6** With increase in temperature the viscosity of air and water varies as
- 'viscosity' of air increases and viscosity of water decreases
 - viscosity of air increases and viscosity of water increases
 - viscosity of air decreases and viscosity of water decreases
 - viscosity of air decreases and viscosity of water increases
- Q.7** If the dynamic viscosity of a liquid is 0.012 poise and its R.D (relative density) is 0.79, its kinematic viscosity in stoke is
- 0.015
 - 0.1
 - 1.5
 - 15
- Q.8** The velocity gradient is 1000/sec. The viscosity is $1.2 \times 10^{-4} \text{ N-s/m}^2$. The shear stress is ____.
- 0.12 N/m^2
 - $1.2 \times 10^{-7} \text{ N/m}^2$
 - 12 N/m^2
 - $12 \times 10^{-5} \text{ N/m}^2$
- Q.9** Two parallel plates, one moving at 4 m/sec and the other one fixed, are separated by a 5 mm thick layer of oil having specific gravity is 0.80 and kinematic viscosity $1.25 \times 10^{-4} \text{ m}^2/\text{sec}$. What is the shear stress in the oil?
- 80 Pa
 - 100 Pa
 - 125 Pa
 - 135 Pa
- Q.10** The space between two parallel plates kept 3 mm apart is filled with an oil of dynamic viscosity 0.2 poise. The shear stress on the fixed plate, if the upper plate is moving with 2 m/sec is ____.

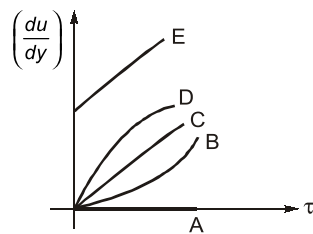


- 13.33 N/m^2
- 15 N/m^2
- 15.67 N/m^2
- 12 N/m^2

- Q.11** Viscosity of a fluid with specific gravity 1.3 is measured to be 0.0034 N-sec/m^2 . Its kinematic viscosity (in m^2/sec) is ____.
- 2.6×10^{-6}
 - 4.4×10^{-6}
 - 5.8×10^{-6}
 - 7.2×10^{-6}

Q.12 Match the following:

1. Newtonian
2. Bingham plastic/ideal plastic
3. Ideal fluid
4. Dilatant
5. Pseudoplastic



- | | A | B | C | D | E |
|-----|---|---|---|---|---|
| (a) | 4 | 2 | 1 | 3 | 5 |
| (b) | 3 | 5 | 1 | 4 | 2 |
| (c) | 3 | 4 | 1 | 5 | 2 |
| (d) | 3 | 5 | 1 | 4 | 2 |

Q.13 Match the following:

List-I

- A. Glycerine
- B. Concentrated sugar solution
- C. Ketchup
- D. Kerosene

List-II

1. Thixotropic
2. Newtonian
3. Dilatant
4. Rheopectic

Codes:

- | | A | B | C | D |
|-----|---|---|---|---|
| (a) | 2 | 3 | 1 | 2 |
| (b) | 4 | 3 | 1 | 2 |
| (c) | 2 | 1 | 3 | 2 |
| (d) | 3 | 1 | 2 | 4 |

Q.14 The shear stress is expressed by:

$$\tau = \mu \cdot \left(\frac{du}{dy} \right)^n$$

Then the n -values for Newtonian and non-Newtonian fluids will be respectively.

- | | |
|----------------------------|-------------------------|
| (a) $n = 1$ and $n < 1$ | (b) $n > 1$ and $n < 1$ |
| (c) $n > 1$ and $n \neq 1$ | (d) $n < 1$ and $n > 1$ |

Q.15 A small circular jet of mercury 0.1 mm in diameter issue from an opening. What is the pressure difference between inside and outside of the jet? (Surface tension of mercury is 0.514 N/m)

- | | |
|---------------|--------------|
| (a) 41 kPa | (b) 21.5 kPa |
| (c) 10.28 kPa | (d) 5.14 kPa |

Q.16 The shape of water droplet over leaf is spherical because of

- (a) Adhesion
- (b) Density
- (c) Surface tension
- (d) Dynamic viscosity

Q.17 Match the following:

List-I

- A. Rise of sap in a tree
- B. Surface tension
- C. Capillary rise
- D. Shape of droplets of water on leaves after rain

List-II

1. Capillarity
2. Cohesion and adhesion
3. Surface tension
4. Cohesion

Codes:

- | | A | B | C | D |
|-----|---|---|---|---|
| (a) | 2 | 4 | 3 | 1 |
| (b) | 1 | 2 | 2 | 3 |
| (c) | 1 | 4 | 2 | 3 |
| (d) | 4 | 1 | 3 | 2 |

Q.18 If a glass tube is dipped in water then the expression of height of rise of liquid upper meniscus will be:

- | | |
|---|---|
| (a) $\frac{4\rho d}{\sigma}$ | (b) $\left(\frac{4\sigma}{\rho g d} \right) + \frac{d}{2}$ |
| (c) $\frac{4\sigma \cos \theta}{2\rho d}$ | (d) $\frac{4\sigma \cos \theta}{(\rho g \cdot d)}$ |

Q.19 Capillary rise is 15 mm in a 3 mm diameter tube immersed in a liquid vertically. If another 4 mm diameter tube is immersed in the same liquid, then the capillary rise would be (in mm)

- | | |
|-----------|-----------|
| (a) 11.25 | (b) 20.00 |
| (c) 8.44 | (d) 26.67 |

Q.20 What is vapour pressure?

- (a) Pressure exerted by atmosphere on liquid surface
- (b) Total external pressure on liquid surface
- (c) Total pressure exerted by vapour in system
- (d) Total pressure exerted by water vapour only at equilibrium

- Q.21** If the volume of a liquid weighing 3000 kg is 4 m^3 , 0.75 is its
 (a) specific mass
 (b) specific weight
 (c) specific volume
 (d) specific gravity

- Q.22** Water flows over the fixed surface causing the viscous velocity (in m/sec) variation along y direction is given by

$$u = 2y - 2y^3 + y^4$$

water dynamic viscosity $\mu = 1 \text{ cp}$. The shear stress at 10 mm from the surface is _____.

- (a) 0.05 N/m^2 (b) 0.99 N/m^2
 (c) 0.004 N/m^2 (d) 0.002 N/m^2

- Q.23** A liquid of density ρ and dynamic viscosity μ flows steadily down an inclined plane in a thin sheet of constant thickness ' t '. Neglecting air friction, the shear stress on the bottom surface due to the liquid flow is (where θ is the angle, the plane makes with the horizontal):

- (a) $\rho g t \sin \theta$ (b) $\rho g t \cdot \cos \theta$
 (c) $\mu \cdot \sqrt{\frac{g}{t}}$ (d) $\rho g t$

- Q.24** An increase in pressure of a liquid from 7.5 MPa to 15 MPa results in to 0.2% decrease in its volume. The coefficient of compressibility of the liquid (in m^2/N) is _____.

- (a) 0.267×10^{-9} (b) 2.67×10^{-9}
 (c) 1×10^{-9} (d) None of these

- Q.25** Assuming that sap in trees has the same characteristics as water and that it rises purely due to capillary phenomenon, what will be the average diameter of capillary tubes in a tree if the sap is carried to a height of 10 m? (Take surface tension of water = 0.0735 N/m)

- (a) 0.003 mm (b) 0.03 mm
 (c) 0.3 mm (d) 0.006 mm

- Q.26** Match the pairs:

List-I

- A. Droplet formation
 B. Weight
 C. Ideal fluid
 D. Newtonian fluid

List-II

1. Zero viscosity
 2. Constant viscosity
 3. Gravity acceleration
 4. Surface tension

Codes:

- | | A | B | C | D |
|-----|---|---|---|---|
| (a) | 2 | 3 | 4 | 1 |
| (b) | 3 | 4 | 2 | 1 |
| (c) | 2 | 4 | 3 | 1 |
| (d) | 2 | 3 | 4 | 1 |

- Q.27** The properties of cohesion and adhesion in addition to surface tension result in _____.

- (a) Compressibility (b) Capillarity
 (c) Viscosity (d) Density

- Q.28** Cavitation is caused due to

- (a) High pressure (b) Low pressure
 (c) High pressure (d) High temperature

- Q.29** Match **list-I** with **list-II** and select the correct answer using the codes given below the lists:

List-I (Description)

- A. Property which explains the spherical shape of the drop of a liquid.
 B. Property which explain the phenomenon of cavitation in a fluid flow.
 C. Property which explains the rise of sap in a tree.
 D. Property which explains the flow of a jet of oil in an unbroken stream.

List-II (Property)

1. Viscosity
 2. Surface tension
 3. Vapour pressure
 4. Capillarity

Codes:

- | | A | B | C | D |
|-----|---|---|---|---|
| (a) | 1 | 2 | 4 | 5 |
| (b) | 2 | 4 | 5 | 1 |
| (c) | 4 | 2 | 5 | 1 |
| (d) | 1 | 2 | 3 | 4 |

- Q.30** A liquid compressed in a cylinder has a volume of 0.04 m^3 at 50 kgf/cm^2 and a volume of 0.039 m^3 at 150 kgf/cm^2 . The bulk modulus of elasticity of liquid is _____.

- (a) 400 kgf/cm^2
 (b) $40 \times 10^6 \text{ kgf/cm}^2$
 (c) $40 \times 10^5 \text{ kgf/cm}^2$
 (d) 4000 kgf/cm^2

ANSWER KEY

STUDENT'S
ASSIGNMENTS

1. (b) 2. (a) 3. (b) 4. (c) 5. (c)
 6. (a) 7. (a) 8. (a) 9. (a) 10. (a)
 11. (a) 12. (c) 13. (a) 14. (a) 15. (c)
 16. (a) 17. (c) 18. (b) 19. (a) 20. (c)
 21. (d) 22. (d) 23. (a) 24. (a) 25. (a)
 26. (b) 27. (b) 28. (b) 29. (b) 30. (d)

HINTS & SOLUTIONS

STUDENT'S
ASSIGNMENTS

2. (a)

Given, $V = 5.66 \text{ m}^3$, $m = 4675 \text{ kg}$

To find

- (i) mass density (ρ)
 (ii) specific weight (γ)
 (iii) Specific gravity (S)

$$\therefore \rho = \frac{4675}{5.66} = 841.87 \text{ kg/m}^3$$

$$\gamma = \frac{841.87 \times 9.81}{1000} = 8.26 \text{ kN/m}^3$$

$$S = \frac{841.87}{1000} = 0.842$$

7. (a)

Given, dynamic viscosity (μ) = 0.012 poise

$$= \frac{0.012}{10} \text{ N-s/m}^2$$

$$= 12 \times 10^{-4} \text{ N-s/m}^2$$

Relative density or specific gravity $S = 0.79$ \therefore Density of liquid (ρ) = $0.79 \times 1000 = 790 \text{ kg/m}^3$ To find kinematic viscosity (ν) = ?

$$\begin{aligned} \nu &= \frac{\mu}{\rho} = \frac{12 \times 10^{-4}}{790} \\ &= 1.51 \times 10^{-6} \text{ m}^2/\text{sec} \\ &= 1.51 \times 10^{-6} \times 10^4 \text{ cm}^2/\text{sec} \\ &= 1.51 \times 10^{-2} \text{ cm}^2/\text{sec} \end{aligned}$$

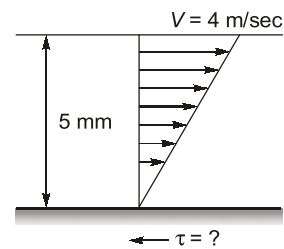
Now, 1 stoke = $1 \text{ cm}^2/\text{sec}$

$$\begin{aligned} \nu &= 1.51 \times 10^{-2} \text{ stokes} \\ &= 0.015 \text{ stoke} \end{aligned}$$

8. (a)

$$\begin{aligned} \tau &= \mu \cdot \left(\frac{du}{dy} \right) \\ &= 1.2 \times 10^{-4} \times (1000) = 0.12 \text{ N/m}^2 \end{aligned}$$

9. (a)



$$\begin{aligned} V &= 4 \text{ m/sec}; y = 5 \text{ mm} \\ &= 5 \times 10^{-3} \text{ m} \end{aligned}$$

$$S = 0.8; \nu = 1.25 \times 10^{-4} \text{ m}^2/\text{sec}$$

$$\tau = \mu \cdot \frac{V}{y}$$

$$\nu = \frac{\mu}{\rho}$$

$$\therefore \mu = 1.25 \times 10^{-4} \times (0.8 \times 1000) = 0.1 \text{ N-s/m}^2$$

$$\therefore \tau = 0.1 \times \frac{4}{5 \times 10^{-3}} = 80 \text{ N/m}^2$$

$$\tau = 80 \text{ Pa}$$

11. (a)

Given, specific gravity (S) = 1.3Dynamic viscosity, (μ) = 0.0034 N-s/m^2 \therefore Kinematic viscosity

$$\begin{aligned} \nu &= \frac{\mu}{\rho} = \frac{0.0034}{1.3 \times 1000} \\ \nu &= 2.6 \times 10^{-6} \text{ m}^2/\text{sec} \end{aligned}$$

15. (c)

Given, $d = 0.1 \text{ mm} = 0.1 \times 10^{-3} \text{ m}$

$$\sigma = 0.514 \text{ N/m}$$

$$\Delta P = \frac{2\sigma}{d} = \frac{2 \times 0.514}{0.1 \times 10^{-3}} = 10.28 \text{ KPa}$$

18. (b)

Height of capillary rise

$$h = \frac{4\sigma \cos \theta}{(\rho g)d}$$