



**BIHAR PUBLIC SERVICE COMMISSION**

**ASSISTANT ENGINEER EXAMINATION**

# **SCIENCE & TECHNOLOGY**





## **MADE EASY Publications Pvt. Ltd.**

**Corporate Office:** 44-A/4, Kalu Sarai, New Delhi-110016 | **Ph. :** 9021300500

**E-mail:** infomep@madeeasy.in | **Web:** www.madeeasypublications.org

---

## **BPSC Assistant Engineer Examination: SCIENCE & TECHNOLOGY**

© Copyright, by MADE EASY Publications Pvt. Ltd.

All rights are reserved. No part of this publication may be reproduced, stored in or introduced into a retrieval system, or transmitted in any form or by any means (electronic, mechanical, photocopying, recording or otherwise), without the prior written permission of the above mentioned publisher of this book.

First Edition : 2018

Reprint : 2022

**Second Edition: 2024**

MADE EASY PUBLICATIONS PVT. LTD. has taken due care in collecting the data and providing the solutions, before publishing this book. In spite of this, if any inaccuracy or printing error occurs then MADE EASY PUBLICATIONS PVT. LTD. owes no responsibility. MADE EASY PUBLICATIONS PVT. LTD. will be grateful if you could point out any such error. Your suggestions will be appreciated.

---

© All rights reserved by MADE EASY PUBLICATIONS Pvt. Ltd. No part of this book may be reproduced or utilized in any form without the written permission from the publisher.

# Preface

---

The compilation of this book **Science & Technology** was motivated by the desire to provide a concise book which can benefit students who are preparing for Bihar Public Service Commission (BPSC) Assistant Engineer Examination.

This particular textbook of Science & Technology provides all the requirements of the students and this concise presentation will help the readers grasp the theory of this subject with clarity and apply them with ease to solve objective questions quickly. This book not only covers the syllabus of BPSC Assistant Engineer Examination in a holistic manner but is also useful for other competitive examinations. All the topics are given the emphasis they deserve so that mere reading of the book clarifies all the concepts. We have put in our sincere efforts to present detailed theory and MCQs without compromising the accuracy of answers.

Our team has made their best efforts to remove all possible errors of any kind. Nonetheless, we would highly appreciate and acknowledge if you find and share with us any printing and conceptual errors.

It is impossible to thank all the individuals who helped us, but we would like to sincerely thank all the authors, editors and reviewers for putting in their efforts to publish this book.



With Best Wishes  
**B. Singh (Ex. IES)**  
CMD, MADE EASY Group

# SCIENCE & TECHNOLOGY

## CHAPTER ► 01

### PHYSICS..... 1

Introduction.....	1
Unit.....	1
Pressure.....	1
Gravitation.....	2
Light.....	3
Mirror.....	4
Basics of Motion.....	5
Circular Motion.....	6
Force.....	7
Newton's Laws of Motion.....	7
Planet.....	8
Basics of Nuclear Physics.....	9
Electronics.....	11
Semiconductor.....	11
Electrostatics.....	11
Coulomb's Law.....	11
Electricity.....	12
Magnetism.....	13
Magnet.....	13
Magnetic Field.....	13
Heat.....	15
Thermodynamics.....	16
Waves & their Properties.....	16
Elasticity.....	17
Surface Tension.....	18
Capillarity.....	18
Viscosity.....	18
Flotation.....	19
Density.....	19
Simple Harmonic Motion/ Pendulum.....	20
<b>Practice Questions</b> .....	21

## CHAPTER ► 02

### CHEMISTRY..... 26

Introduction.....	26
Physical Chemistry.....	26
Matter.....	26

Atomic Structure.....	28
Mole Concept.....	29
Isotopes, Isobars and Isotones.....	29
Radioactivity.....	31
Chemical Bonding.....	33
Oxidation-Reduction.....	34
Acids, Bases and Salts.....	34
Gas Laws.....	37
Electrolysis.....	38
Inorganic Chemistry.....	38
Periodic Classification of Elements.....	38
Metals and Metallurgy.....	40
Metals and their Properties.....	40
Non-Metals & their properties.....	46
Organic Chemistry.....	56
Introduction.....	56
Classification of Organic Compounds.....	56
Different Classes of Organic Compounds.....	58
Some Important Organic Compounds.....	60
<b>Practice Questions</b> .....	63

## CHAPTER ► 03

### BIOLOGY..... 66

Basics of biology.....	66
Plants.....	66
Animals.....	67
Miscellaneous.....	69
The Cell.....	70
Structure of Cell.....	71
Details of cell organelles.....	72
Cellular Pool.....	73
Cell cycle.....	73
Cell Division.....	73
Nutrition.....	74
Photosynthesis.....	75
Chemosynthesis.....	75
Composition of Food.....	75
Digestive System.....	82
Digestive Hormones.....	84
Teeth.....	84

Bones.....	86
Joints.....	88
Muscles.....	89
Respiratory System.....	89
Important Respiratory Organs.....	89
Important Lung Volumes.....	90
Circulatory System.....	91
Heart.....	92
Blood.....	93
Lymphatic System.....	96
Integumentary System.....	97
Skin.....	97
Glandular System.....	100
Nervous System.....	106
Sensory organs.....	109
Human Reproductive System.....	111
Human Diseases.....	114
Types of Diseases.....	114
Miscellaneous.....	120
Important Fields and Their Founders.....	120
Theories of Evolution.....	121
Some Important Data.....	121
<b>Practice Questions.....</b>	<b>124</b>

## CHAPTER ► 04

### COMPUTER & INFORMATION

#### TECHNOLOGY..... 128

Basics of Computer.....	128
Types of Computers.....	128
Software.....	129
Programming Languages.....	130
Input Devices.....	130
Output Devices.....	131
Database Management System (DBMS).....	131
Memory.....	133
Computer Networks.....	134
Network Topology.....	134
Communication System.....	136
Internet Protocol.....	137
Masking.....	137
Router.....	137

**Previous Year Questions..... 155-161**

**BPSCL Prelims Exam (General Paper • General Studies Section : AE), 2018..... 155-158**

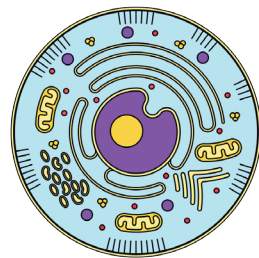
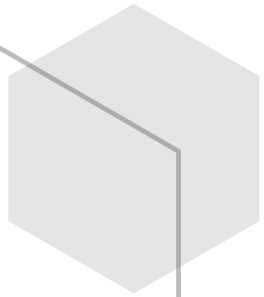
**BPSCL Prelims Exam (General Paper • General Studies Section : AE), 2022..... 159-161**

Firewall.....	138
Network Security.....	138
Cryptography.....	138
Operating System.....	138
Microsoft Windows.....	139
Internet.....	140
Web Browser.....	140

## CHAPTER ► 05

#### MISCELLANEOUS..... 142

Department of Biotechnology (DBT).....	142
Stem Cells.....	142
Oesophageal Organoids.....	143
Earth BioGenome Project.....	143
Gene Editing.....	143
Gene Silencing.....	143
Three Parent Baby.....	143
Genetically Modified Mosquitoes.....	144
Gene Therapy for Cancer.....	144
Microbial Fuel Cell (MFC).....	144
CAR-T.....	144
Biomarkers.....	144
Artificial Leaf.....	144
Chlorophyll – f.....	144
BIO International Convention.....	144
Pratyush.....	145
Mihir.....	145
National Supercomputing Mission.....	145
Quantum Computing.....	145
Quantum Dots.....	145
Quantum Mechanics.....	145
Virtual Reality.....	146
Microsoft HoloLens-Augmented Reality.....	146
Bitcoins.....	146
Block Chain Technology.....	146
High Nitrogen Steel.....	146
India's first indigenous Lithium Ion Battery project.....	146
Lithium-ion Battery.....	146
5G technology.....	147
4D Printing.....	147
Li-Fi.....	147
Humanoid Robot-Sophia.....	147
<b>Practice Questions.....</b>	<b>148</b>





# PHYSICS

# 1

## CHAPTER

### INTRODUCTION

- Physics is a branch of science which is concerned with all aspects of nature on both the microscopic and macroscopic level. Its scope of study encompasses not only the behavior of objects under the action of forces but also the nature of gravitational, electromagnetic, nuclear forces among others.
- The ultimate objective of physics is to formulate comprehensive principles that bring together and explain all such phenomena.

#### Unit

- Unit is the chosen standard used for measuring a physical quantity.
- There are basically two types of unit:
  - 1. Fundamental Unit:** These units are a set of measurements, defined arbitrarily and from which other units are derived. Examples: meter, kilogram, second, etc.  
The fundamental unit of some of the physical quantities are given below:

SI.	Physical Quantity	S.I. Unit
1	Length	Meter (m)
2	Mass	Kilogram (kg)
3	Time	Second (s)
4	Temperature	Kelvin (K)
5	Electric Current	Ampere (A)
6	Luminous Intensity	Candela (Cd)
7	Amount of Substance	Mole (mol)
8	Plane Angle	Radian (rad)
9	Solid Angle	Steradian (sr)

**2. Derived Unit:** All the units which are expressed in terms of fundamental units are known as derived units. Examples: Newton, Joule, etc.

- Internationally, there are four types of unit systems. These are:

**1. S.I. Units/System:** It is the modern form of the metric system, and is the most widely used system of measurement. It comprises a coherent system of units of measurement built on seven base units namely kilogram, meter, second, candela, ampere, kelvin and mol.

**2. CGS System:** The centimeter-gram-second (CGS) system of units is a variant of the metric system based on centimetre as the unit of length, gram as unit of mass, and the second as the unit of time.

**3. FPS System:** The foot-pound-second (FPS) system is a system of units built on three fundamental units: the foot for length, the pound for mass and the second for time.

**4. MKS System:** The MKS system of units is a physical system of units that expresses any given measurement using base units of the metre, kilogram, and second.

### PRESSURE

#### Pressure

Pressure is defined as force acting normally on unit area of the surface. SI unit of pressure is  $\text{N/m}^2$  also called Pascal (**Pa**). Pressure is a scalar quantity.

$$\text{Pressure (P)} = \frac{F}{A} = \frac{\text{Normal force acting on the surface}}{\text{Area of the surface}}$$

### Atmospheric Pressure

Atmospheric pressure is that pressure which is exerted by the atmospheric gases and measured by a mercury column of 76 cm length at 0°C at 45° latitude at the sea-level. It is equal to weight of 76 cm column of mercury of cross-section area 1 cm<sup>2</sup>. Generally, it is measured in bar.

Atmospheric pressure 1 atm = 1.01 bar =  $1.01 \times 10^5$  N/m<sup>2</sup>

#### Interesting Facts

- It is difficult to cook on the mountain as the pressure is low on mountain in comparison to plain areas as atmospheric pressure decreases with the increase of height.
- The fountain pen of a passenger leaks in aeroplane at height, due to reduction in atmospheric pressure.

### Measurement of Pressure

- Barometer measures the atmospheric pressure.
- Sudden fall in barometric reading is the indication of storm.
- Slow fall in barometric reading is the indication of rain.
- Slow rise in the barometric reading is the indication of clear weather.

### Pascal's Law of Pressure

It states that "the pressure exerted anywhere at a point of confined fluid is transmitted equally in all directions throughout the liquid". Examples: Hydraulic lift, hydraulic press, hydraulic brake, etc. work on the Pascal's law.

#### Effects:

- If gravitational attraction is negligible in equilibrium condition, pressure is same at all points in a liquid.
- If an external pressure is applied to an enclosed fluid, it is transmitted undiminished to every direction.

### Effect of pressure on Melting Point and Boiling Point

- The melting point of substances which expands on fusion increases with the increase in pressure.  
**Example:** Wax.
- The melting point of substances which contracts on fusion decreases with the increase in pressure.  
**Example:** Ice.

- Boiling point of all the substances increases with the increase in pressure.

## GRAVITATION

### Gravitation

Each and every massive body attracts each other by virtue of their masses. This phenomenon is called gravitation.

### Newton's Law of Gravitation

The gravitational force of attraction between two bodies is directly proportional to the product of their masses and inversely proportional to the square of the distance between them.

$$\text{Gravitational force } (F) = G \cdot m_1 \cdot m_2 / r^2$$

Where  $G$  is the gravitational constant =  $6.67 \times 10^{-11}$  Nm<sup>2</sup>kg<sup>-2</sup>,  $m_1$  and  $m_2$  are the masses of two bodies and  $r$  is the distance between them.

### Acceleration due to Gravity of Earth

The acceleration produced in a body due to the gravitational pull of the earth is called acceleration due to gravity.

$$g = GM/R^2$$

Where  $M$  is the mass of the Earth and  $R$  is the radius of the Earth.

#### Note:

- The value of  $g$  slightly changes from place to place but its value near the Earth's surface is 9.8 ms<sup>-2</sup>.
- Gravitational force is the weakest force in nature.

### Factors affecting the value of g:

- **Shape of Earth:** The shape of Earth affects the value of acceleration due to gravity. Therefore, the value of  $g$  is maximum at poles and minimum at the equator.
- **Rotation of Earth on its axis:** The value of  $g$  decreases if angular speed of Earth increases and vice-versa.
- **Effects of Altitude:** The value of  $g$  decreases with the increase in height.
- **Effects of depth:** The value of  $g$  decreases with depth and become zero at the centre of the earth.



**Do You Know?**

The Centre of Gravity of a body is that point at which whole weight of the body appears to be concentrated.

**Mass and Weight**

- The mass of a body is the quantity of matter contained in it. Mass is a scalar quantity and its S.I. unit is kg. Mass of a body does not change from place to place.
- The weight of the body is the force with which it is attracted towards the centre of the earth. Weight of the body is a vector quantity and its unit is Newton. The weight of the body is a variable quantity and it changes from place to place.

$$w = mg$$

**Cases: Weight of a body in a lift:**

- When the lift is at rest or in uniform motion then the apparent weight is equal to the real weight of the body. i.e.  $w = mg$ .
- When the lift is accelerating upward then apparent weight is greater than the real weight of the body. i.e.  $w = m(g + a)$
- When the lift is accelerating downward then the apparent weight of the body is less than the real weight of the body. i.e.  $w = m(g - a)$ .
- When lift is falling freely under gravity the apparent weight of the body is zero. i.e.

$$w = m(g - g) = 0 \text{ [As } a = g]$$

**Note:** The weight of the body on the moon is lesser than that of on the earth as the acceleration due to gravity at the moon is less than the acceleration due to gravity on earth. The value of  $g$  on Earth is 6 times than that of on the moon.

**OPTICS****Light**

- Light is a form of energy, which is propagated as an electromagnetic wave. It is the radiation which makes our eyes able to see the object.
- Since, electromagnetic waves are transverse, hence light energy is also represents transverse wave.
- The light energy emitted from the sun takes 8 minute 19 second to reach on the earth. The speed of light is  $3 \times 10^8$  m/s.

- When light falls on the surface of an object it can be absorbed, transmitted or reflected.
  - **Absorption of light:** The absorption process said to occur when an object absorbs all or some fraction of the light falling on it. If an object absorb all light falling on it, will appear perfectly black. For example: a blackboard.
  - **Transmission of light:** The transmission process said to occur when an object transmits light i.e. it allows light to pass through itself and such objects will appear transparent. For example : a glass jar.
  - **Reflection of light:** The reflection process said to occur when an object sends back light rays falling on its surface. In other words, when a ray of light falls on a boundary separating two media comes back into the same media, then this phenomenon is called the reflection of light. For example : a mirror.

**Laws of Reflection of light**

There are two fundamental laws of reflection of light:

- The angle of incidence is equal to the angle of reflection.
- The incident ray, the reflected ray and the normal to the mirror at the point of incidence all lie in the same plane.

**Do You Know?**

Due to refraction from Earth's atmosphere, the stars appear to twinkle.

**Laws of Refraction of Light**

There are two laws of refraction:

- The incident ray, the refracted ray and the normal at the point of incidence all three lie in the same plane.
- The ratio of sine angle of incidence to the sine angle of refraction remains constant for a pair of media i.e.

$\sin i / \sin r = \mu_2 / \mu_1 = \text{constant}$ , this law is known as Snell's law.

Where  $\mu_1$  and  $\mu_2$  are refractive indices of two different mediums.

**Applications of Refraction**

There are various applications of refraction process. Some of them are:

- When light travels through a denser medium towards a rarer medium it deviates away from the normal, therefore a pond appears shallower.

- A coin appears at lesser depth in water.
- Writing on a paper appears lifted when a glass slab is placed over the paper.

### Critical Angle

The angle of incidence in a denser medium for which the angle of refraction in rarer medium becomes  $90^\circ$ , is called the critical angle.

### Total Internal Reflection

- When a light ray travelling from a denser medium to the rarer medium, at the interface if the angle of incidence becomes greater than critical angle, then light rays reflected back into the denser medium. This phenomenon is known as total internal reflection.
- The examples of total internal reflection are sparkling of diamond, mirage, shinning of the air bubble in water, Optical fibre, etc.

## Mirror

### Spherical Mirror

It is a type of mirror which has the shape of a piece cut-out of a spherical surface.

There are mainly two type of spherical mirrors:

1. **Concave mirror:** The image formed by a concave mirror is generally real and inverted.

#### Uses of Concave Mirror

- As a shaving mirror
- As a reflector for the headlights of a vehicle, searchlight, etc.
- In ophthalmoscope to examine the eye, ear, nose by doctors. In solar cookers, etc.

2. **Convex mirror:** The image formed by a convex mirror is always virtual, erect and diminished.

#### Uses of Convex Mirror

- As a rear view mirror in the vehicle because it provides the maximum rear field of view and image formed is always erect.
- In sodium reflector lamp.

### Basic Terms related to Spherical Mirrors

1. **Centre of Curvature (c):** The centre of the hollow glass sphere of which the mirror is a part, is known as centre of curvature.
2. **The radius of Curvature (R):** The radius hollow sphere of which the mirror is a part, is known as radius of curvature
3. **Pole (P):** The mid-point of a spherical mirror is called pole.
4. **Focus (F):** When a parallel beam of light rays is incident on a spherical mirror then after reflection it meets or appears to meet at a point on the principal axis, called focus of the spherical mirror.
5. **Focal length (f):** It is the distance from the pole of mirror to its focus.  
Focal length =  $R/2$ , where R is radius of curvature.
6. **Principal axis:** The Principal axis of a spherical mirror is the straight line passing through the centre of curvature and pole of a spherical mirror, produced on both the sides.
7. **Aperture:** The portion of the mirror from which the reflection of light actually takes place is called the aperture of the mirror, it is also called linear aperture of the mirror.

### Images formation by a Concave Mirror

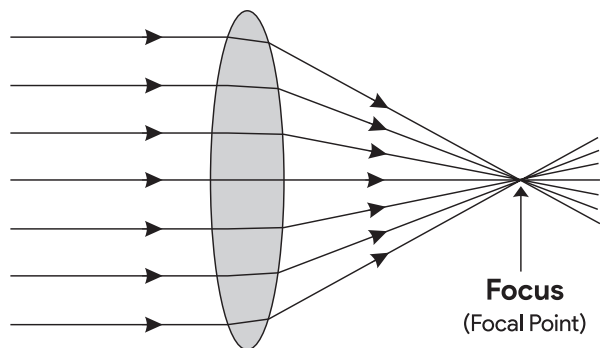
Position of object	Position of image	Size of image with comparison to object	Nature of image
At infinity ( $\infty$ )	At focus	Very small	Real and inverted
Between centre of curvature and infinity	Between focus and centre of curvature	Small	Real and inverted
At centre of curvature	At centre of curvature	Equal in length	Real and inverted
Between focus and centre of curvature	Between centre of curvature and infinity	Large	Real and inverted
At focus	At infinity ( $\infty$ )	Very large	Real and inverted
Between pole and focus	Behind the mirror	Large	Virtual and erected

### Images formation by a Convex Mirror

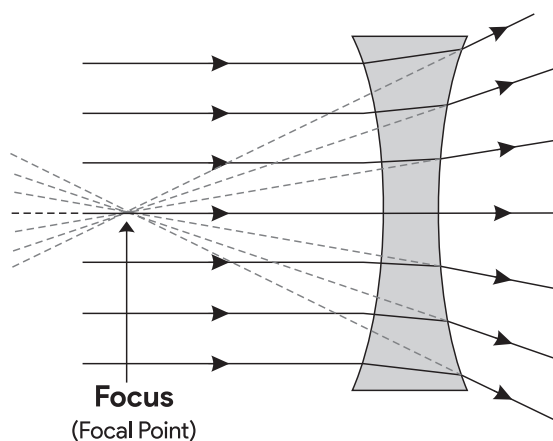
Position of object	Position of image	Size of image with comparison to object	Nature of image
At infinity ( $\infty$ )	At focus	Very small	Virtual and Erect
Anywhere except infinity ( $\infty$ )	Between focus and Pole	Small	Virtual and Erect

### Lenses

- A lens is a uniform refracting medium bounded by two spherical surface or one plane surface.
- Lenses are of two types:
  - Convex lens:** A convex lens is converging lens. When parallel rays of lights pass through a convex lens, the refracted rays converge at one point call the principal focus.



- Concave lens:** A concave lens is diverging lens. The rays of light that pass through the lens are spread out (they diverge). The image formed is virtual and diminished.



### Magnification of lens

It is the ratio of height of image to height of object.

### Prism

Prism is a uniform transparent refracting medium bounded by plane surfaces inclined at some angles forming a triangular shape.

### Dispersion of light

- When a light is incident on a glass prism, it disperses into its seven colour components in the following sequence VIBGYOR, and this is known as the dispersion of white light.
- The refractive index of glass is maximum for violet colour and minimum for the red colour of light, therefore the violet colour of light deviated maximum and red colour of light deviated least.

## MOTION

### Basics of Motion

#### Scalar Quantities

Physical quantities which have magnitude only and no direction are called scalar quantities.

**Examples:** Mass, speed, volume, work, time, power, energy, etc.

#### Vector Quantities

Physical quantities which have magnitude and direction both and which obey triangle law are called vector quantities.

**Examples:** Displacement, velocity, acceleration, force, momentum, torque, etc.

#### Tensor Quantities

Physical quantities that vary in two different directions are properly described as tensors.

**Examples:** Moment of inertia, pressure, refractive index, and stress.

**Do You Know?**

Electric current, though has a direction, is a scalar quantity because it does not obey triangle law.

**Distance**

Distance is the actual path travelled by a body in a given period of time.

**Displacement**

Displacement is the change in the position of the object in a given period of time. In other words, it is the shortest distance.

**Basic difference between Distance and Displacement**

Distance	Displacement
It is a scalar quantity.	It is a vector quantity.
Distance is always positive.	Displacement may be positive, negative or zero.

**Speed**

The distance travelled by the moving object in unit time interval is called speed.

$$\text{Speed} = \text{Distance} / \text{Time}$$

- It is a scalar quantity and its SI unit is meter/second (m/s).
- The speed of an object at any instant is called instantaneous speed.
- An object is said to be travelled with non-uniform speed if it covers the unequal distance in equal interval of time.

**Velocity**

The velocity of a moving object is defined as the displacement of the object in unit time interval.

$$\text{Velocity} = \text{Displacement} / \text{Time}$$

- It is a vector quantity and its SI unit is meter/second.
- If a body goes equal displacement in equal interval of time then it is called uniform velocity.
- If a body undergoes unequal displacement in equal interval of time then it is called variable velocity.

**Relative Velocity**

It is the velocity of a body with respect to another which is considered as being at rest.

- If the velocity of a body is  $V_1$  and velocity of other body is  $V_2$ , then relative velocity is
  - =  $V_1 + V_2$ , if two bodies travel in opposite direction.
  - =  $V_1 - V_2$ , if two bodies travel in the same direction.

**Acceleration**

Acceleration of an object is defined as the rate of change of velocity of the object. It is a vector quantity and its SI unit is meter/second<sup>2</sup> (m/s<sup>2</sup>).

**Some related equations of acceleration are**

$$\begin{aligned} v &= u + at \\ S &= ut + \frac{1}{2} at^2 \\ v^2 &= u^2 + 2as \end{aligned}$$

Where,  $v$  is final velocity,  $u$  is initial velocity,  $t$  is a time interval,  $a$  is acceleration and  $s$  is the distance travel.

**Retardation**

If velocity decreases with time then the acceleration is considered as negative and it is called retardation.

**Constant Acceleration**

If acceleration does not change with time then it is called constant acceleration.

**Circular Motion**

- The motion of an object along a circular path is called circular motion.
- If the object moves with uniform speed, its motion is uniform circular motion.
- Uniform circular motion is an accelerated motion because the direction of the velocity changes continuously.

**Angular Displacement**

The angle subtended at the center of a circle by a body moving along the circumference of the circle is called angular displacement of the body. Its unit is radian.

Angular displacement = Length of arc / Radius of the circle

**Angular Velocity**

The time rate of change of angular displacement is called angular velocity. It is generally denoted by  $\omega$ .

$$\omega = \frac{\theta}{t}$$

Where  $\theta$  = position angle,  $t$  = time

## Force

- Force is that external cause which when acts on a body change or tries to change the initial state of the body. The SI unit of force is Newton (**N**).
- A body is said to be in equilibrium if the sum of all the forces acts on the body is zero.

### Do You Know?

The nuclear force is the strongest force.

## Momentum

- Momentum is the property of a moving body and is defined as the product of mass and velocity of the body.  
Momentum = mass  $\times$  velocity.
- Momentum is a vector quantity. Its SI unit is kg-m/s.

## Newton's Laws of Motion

### Newton's First Law

It states that "If no external force acts on a body then it remains in the same state of rest or motion that is in its present state".

**Inertia:** Inertia is the property of a body by virtue of which it opposes any change in its state of rest or of uniform motion.

### Examples of inertia are:

- When a bus or train at rest starts to move suddenly the passengers sitting in it feels a jerk in backward direction due to the inertia of rest.
- Dust particle comes out of a carpet if we beat it with the stick.
- A passenger jumping out of a train is advised to jump in the direction of the bus and ran for a short distance.
- When a running bus or train stops suddenly, the passengers sitting in it jerk in the forward direction due to the inertia of motion.

### Newton's Second Law

It states that "The rate of change in momentum of a body is directly proportional to the applied force on the body and takes place in the direction of the force".

$$F = ma$$

Where  $F$  is the force applied,  $m$  is mass of the body and  $a$  is the acceleration.

### Newton's Third Law

It states that "To every action, there is an equal and opposite reaction".

**Examples:** (i) Recoil of a gun, (ii) Motion of rocket. (iii) While drawing water from the well, if the string breaks up, the drawing water falls back.

### Centripetal Force

- When a body is in a circular motion, a force always acts on the body towards the centre of the circular path, this force is called centripetal force.
- If a body of mass  $m$  is moving on a circular path of radius  $r$  with uniform speed  $v$ , then the required Centripetal force,  $F = mv^2 / r$

### Centrifugal Force

Centrifugal force is equal and opposite of Centripetal force.

### Applications of Centripetal and Centrifugal forces

- The gravitational force of attraction between earth and sun acts as centripetal force.
- Orbital motion of electrons around the nucleus.
- Roads are banked at turns to provide required centripetal force for taking a turn.
- The cream is separated from milk when it is rotated in a vessel about the same axis.
- Cyclist inclined itself from vertical to obtain required centripetal force.

### Principle of Conservation of Linear Momentum

If no external force acts on a system of bodies, the total linear momentum remains constant. As a consequence, the total momentum of bodies before and after collision remains the same.

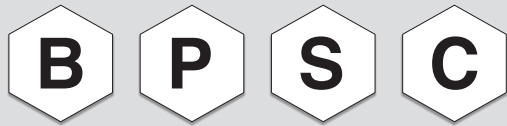
**Examples:** As in case of the rocket, ejecting gas exerts a forward force which helps in accelerating the rocket in the forward direction.

### Impulse

- When a large force acts on a body for a very small interval of time, then this type of force is called impulsive force.

Impulse = Force  $\times$  time = change in momentum

- It is a vector quantity and its direction is in the direction of the force. The SI unit of impulse is Newton-second (N-s).



BIHAR PUBLIC SERVICE COMMISSION

ASSISTANT ENGINEER EXAMINATION

Prelims Exam, 2022

## GENERAL PAPER (GENERAL STUDIES SECTION)

- Q.1** Which of the following refers to a small single-site network?  
(a) USB (b) LAN  
(c) DSL (d) RAM
- Q.2** LINUX operating system is superior because of its  
(a) automation character  
(b) compact-code system  
(c) strong compilers  
(d) strong security kernel
- Q.3** Rainbow is formed in the sky by the physical phenomenon of  
(a) total internal reflection—interference  
(b) reflection—dispersion  
(c) reflection—dispersion—refraction  
(d) total internal reflection — dispersion—interference
- Q.4** Technically the thickness of stable metal coating on another metal should be of the order of  
(a) centimeter  
(b) nanometer  
(c) micrometer  
(d) millimeter
- Q.5** Most of the engineering tools and machines are made up of steel because of their  
(a) more durability  
(b) high elasticity  
(c) heavy weight  
(d) easy availability and cheapness
- Q.6** Heat is conducted in solids by  
(a) electrons  
(b) photons  
(c) phonons  
(d) protons
- Q.7** Technically metals get expansions due to heat in dimensions because of the energies of  
(a) electrons  
(b) photons  
(c) phonons  
(d) heat
- Q.8** Detergents clean cloths in washing machine because water solution has  
(a) low weight  
(b) low density  
(c) low temperature  
(d) low surface tension
- Q.9** Trees pull water from deep ground according to the property of  
(a) photosynthesis  
(b) wood nature  
(c) mineral water  
(d) capillary action
- Q.10** In the state of our tiredness we either sit down or sleep flat for the sake of the  
(a) body low temperature  
(b) body relaxation  
(c) body center of gravity  
(d) body low gravity potential
- Q.11** We have two eyes because of the perception of the objects in the dimension of  
(a) area  
(b) length  
(c) height  
(d) depth



- Q.12** Over the palms and fingers, we have line grooves for the  
 (a) static friction  
 (b) palmistry  
 (c) future prediction  
 (d) gripping power
- Q.13** In information technology (IT), most secret messages are sent by  
 (a) phase-frequency modulation  
 (b) amplitude modulation  
 (c) frequency modulation  
 (d) phase modulation
- Q.14** The moon sky is dark compared to blue sky of the earth because  
 (a) moon has less escape velocity  
 (b) moon is smaller in size  
 (c) moon shines bright  
 (d) moon is the satellite of the earth
- Q.15** Black hole eats all stars because  
 (a) it has large mass and large size  
 (b) it has small mass and small size  
 (c) it has large mass and small size  
 (d) it has small mass and large size
- Q.16** Satellites are  
 (a) never geostationary objects  
 (b) free-falling objects under gravity  
 (c) man-made objects in the sky  
 (d) time- and fuel-less objects
- Q.17** Superfast computation is done through  
 (a) Q-bits  
 (b) unitary bits  
 (c) binary bits  
 (d) ternary bits
- Q.18** In reasonable hydrogen-oxygen chain reaction  

$$\text{H}_2 + \text{O}_2 \rightarrow \text{HO}_2 + \text{H}$$

$$\text{H}_2 + \text{HO}_2 \rightarrow \text{OH} + \text{H}_2\text{O}$$

$$\text{OH} + \text{H}_2 \rightarrow \text{H}_2\text{O} + \text{H}$$

$$\text{O}_2 + \text{H} \rightarrow \text{OH} + \text{O}$$

$$\text{H}_2 + \text{O} \rightarrow \text{OH} + \text{H}$$
 Which are chain branching propagators?  
 (a) OH, H, O                      (b) OH, O  
 (c) OH, H                          (d) O, H
- Q.19** When we heat the mixture of  $\text{CH}_3\text{CHO}$  and  $\text{CD}_3\text{CDO}$ , we get  

$$\text{CH}_3\text{CHO} \rightarrow \text{CH}_4 + \text{CO}$$

$$\text{CD}_3\text{CDO} \rightarrow \text{CD}_4 + \text{CO}$$
 but radical mechanism indicates that we should obtain  
 (a)  $\text{CH}_3\text{D}_3$                       (b)  $\text{CH}_2\text{D}_2$   
 (c)  $\text{CD}_2\text{H}_2$                       (d)  $\text{CH}_3\text{D}$
- Q.20** Sucrose concentration  $C_0$  decreases with time and with rate constant  $k$  as  
 (a)  $C = C_0 e^{-kt}$   
 (b)  $C = -C_0 kt$   
 (c)  $C = -C_0 kt^2$   
 (d)  $C = C_0 \log kt$
- Q.21** The equilibrium constant of dissociation reaction of oxygen  

$$\text{O}_2 \rightleftharpoons 2\text{O}$$
 At temperature 1000 K is obtained to be  
 (a)  $5.2 \times 10^{-7}$   
 (b)  $1.4 \times 10^{-37}$   
 (c)  $3.3 \times 10^{-20}$   
 (d)  $2.5 \times 10^{-10}$
- Q.22** The given molecular orbital configuration of diatomic molecule  

$$(2s\sigma g)^2 (2s\sigma u)^2 (2p\sigma g)^2 (2p\sigma u)^4$$
 stands for  
 (a) OH  
 (b)  $\text{O}_2$   
 (c)  $\text{N}_2$   
 (d) CO
- Q.23** Photolysis of acetone  $(\text{CH}_3)_2\text{CO} + \frac{h\nu}{\lambda} \rightarrow \text{C}_2\text{H}_6$   
 + CO needs photon of wavelength ( $\lambda$ )  
 (a) 2200 Å                      (b) 3300 Å  
 (c) 3130 Å                      (d) 2950 Å
- Q.24** In acid solution, the electrode reaction  

$$\text{Cu}^{++} + \text{e}^- = \text{Cu}^+$$
 has electrode standard potential  
 (a) 0.612 V  
 (b) 0.153 V  
 (c) 0.306 V  
 (d) 0.459 V

- Q.25** Cracking reaction  $C_2H_6 \rightarrow 2CH_4$  heats up at  
 (a) 30213 cal  
 (b) 15540 cal  
 (c) 41745 cal  
 (d) 40110 cal
- Q.26** A chemical reaction is 20% complete in 15 min at 40°C and in 3 min at 60°C, then how much activation energy is required?  
 (a) 18.4 kcal  
 (b) 12.4 kcal  
 (c) 14.4 kcal  
 (d) 16.4 kcal
- Q.27** The conductivity of a saturated AgCl solution is higher in  $H_2O$  at 20°C by  $1.26 \times 10^{-6} \text{ ohm}^{-1} \text{ cm}^{-1}$  than for the water used. Now the solubility of AgCl in  $H_2O$  is  
 (a)  $4.21 \times 10^{-1}$  moles liter<sup>-1</sup>  
 (b)  $13.6 \times 10^{-1}$  moles liter<sup>-1</sup>  
 (c)  $9.14 \times 10^{-6}$  moles liter<sup>-1</sup>  
 (d)  $6.28 \times 10^{-6}$  moles liter<sup>-1</sup>
- Q.28** Ctrl, Shift and Alt keys are  
 (a) adjustments  
 (b) modifiers  
 (c) functions  
 (d) alphanumeric
- Q.29** A computer cannot 'boot' unless it has  
 (a) assembler  
 (b) compiler  
 (c) loader  
 (d) operating system
- Q.30** Junk e-mail is also known as  
 (a) spool  
 (b) spam  
 (c) spoof  
 (d) sniffer script
- Q.31** Several computers linked to a server to share programs and storage space are called  
 (a) integrated  
 (b) network  
 (c) grouping  
 (d) library
- Q.32** Which software program is used to view Web pages?  
 (a) Browser  
 (b) Site  
 (c) Host  
 (d) Link
- Q.33** USB is which type of storage device?  
 (a) Auxiliary  
 (b) Tertiary  
 (c) Secondary  
 (d) Primary
- Q.34** In MICR, C stands for  
 (a) Character  
 (b) Code  
 (c) Colour  
 (d) Computer

- |         |         |         |         |         |         |         |         |         |
|---------|---------|---------|---------|---------|---------|---------|---------|---------|
| 1. (c)  | 2. (d)  | 3. (c)  | 4. (c)  | 5. (a)  | 6. (a)  | 7. (a)  | 8. (d)  | 9. (d)  |
| 10. (d) | 11. (a) | 12. (d) | 13. (a) | 14. (a) | 15. (a) | 16. (d) | 17. (c) | 18. (c) |
| 19. (c) | 20. (a) | 21. (a) | 22. (b) | 23. (b) | 24. (b) | 25. (d) | 26. (a) | 27. (d) |
| 28. (c) | 29. (d) | 30. (b) | 31. (b) | 32. (a) | 33. (c) | 34. (a) |         |         |